



DISHWASHER

SERVICE MANUAL

NOTE

BEFORE SERVICING THE UNIT, PLEASE READ THIS MANUAL CAREFULLY FOR SAFETY AND CORRECT SERVICES.

MODEL : D1420W(L,M,T,B,C,D,A)F
D1421W(L,M,T,B,C,D,A)F
D1422W(L,M,T,B,C,D,A)F
D1423W(L,M,T,B,C,D,A)F
D14131WF / D14135LF
D14138AC / D14121WH
LD-4321W / LD-4421M
LD-4421PV / LD-4421NV

Un guide d'utilisation vidéo est disponible sur
www.guidelg.com/lave-vaisselle

You may also find user manual in video version at following link
www.guidelg.com/dishwasher

CONTENTS

1. CAUTION.....	4
2. SPECIFICATIONS	5
3. PARTS NAME	6
4. FEATURES & TECHNICAL EXPLANATION	7
5. WIRING DIAGRAM.....	12
6. PROGRAM CHART (SCHEMATIC DIAGRAM).....	13
7. HOW TO DISASSEMBLE	14
8. TROUBLE SHOOTING METHODS.....	27
A. TROUBLE SHOOTING ACCORDING TO DISPLAYED ERROR MESSAGE	27
B. TROUBLE DIAGNOSES AND REPAIR BY SYMPTOM.....	29
9. INSTALLATION INSTRUCTION	33
10. EXPLODED VIEW	37

CAUTION !

- DISCONNECT POWER CORD BEFORE SERVICING
- RECONNECT ALL GROUNDING DEVICES

IMPORTANT SAFETY NOTICE !

This service information is intended for individuals possessing adequate backgrounds of electrical, electronic and mechanical experience.

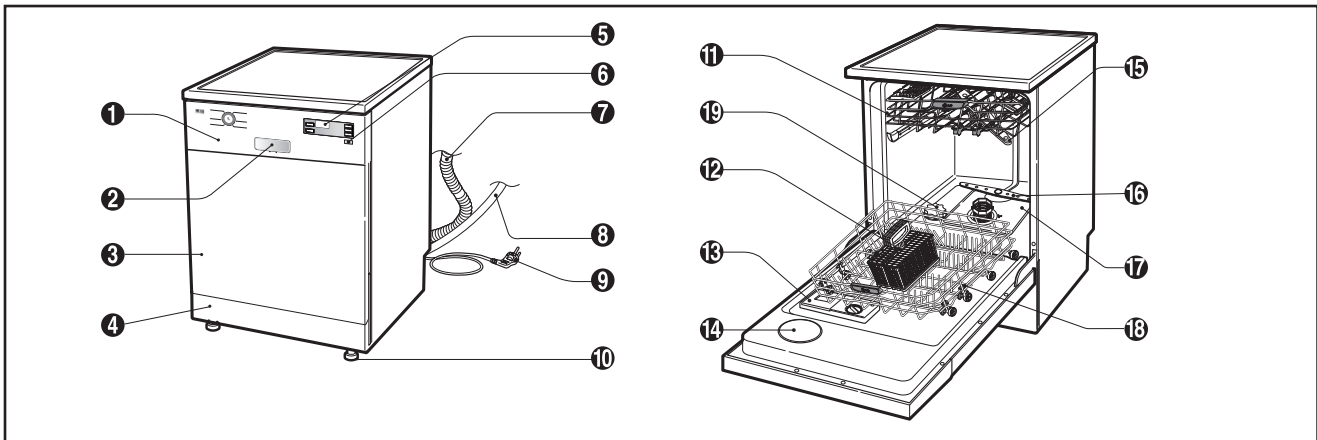
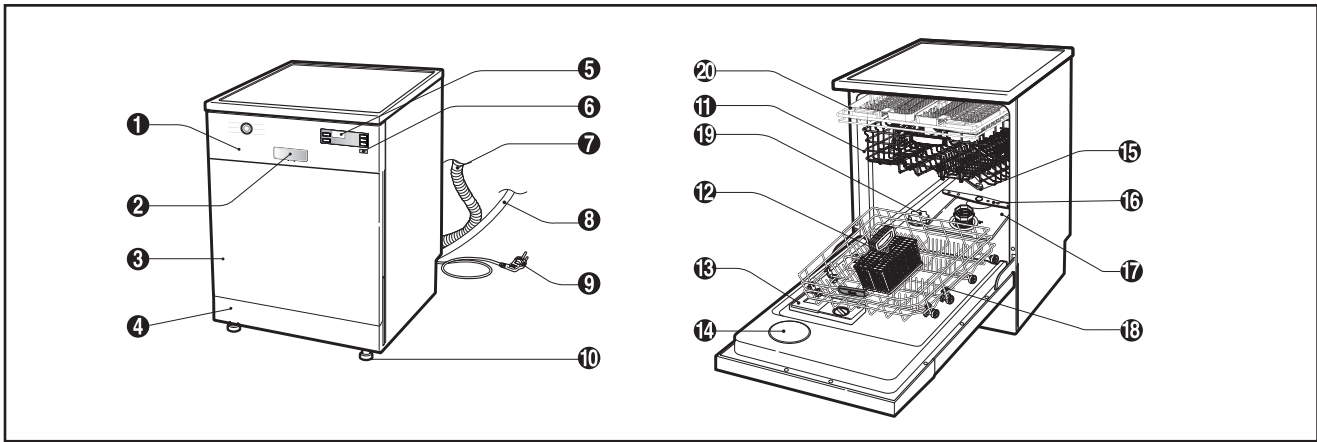
Any attempt to repair this appliance may result in personal injury and property damage.

The manufacturer or seller can not be responsible for the interpretation of this information, nor can it assume any liability in connection with its use.

2. SPECIFICATION

ITEM	SPECIFICATION		
Rated Voltage / Frequency	AC 220V/50Hz	AC 230V/50Hz	AC 240V/50Hz
Installation	Freestanding		
Place Settings	14		
Product Dimension(mm)	600(W) × 600(D) × 850(H)		
Product Weight(Kg)	60kg		
Color	White / Luxury Silver / Titanium / STS Black / ACM / Dark Red / Perl Silver		
Tub Material	Stainless Steel		
Control	Electronic		
Rated Power(Watt)	1,534	1,670	1,812
Heater Power(Watt)	1,464	1,600	1,742
Programs	6		
Rack	Nylon Coating		
Upper Rack	Adjustable type		
Lower Rack	D1420 / D1421 / D1423 : 50% Fold down, Removal type D1422 : 50% Fold down		
Water Consumption (ℓ)	14 (Eco)		
Power Consumption (kWh)	1.08 (Eco)		
Operating Time (min)	199		
Fan Dry System	Yes		
Delay Start Function	Yes		
Auto-Off Power Switch	Yes		
Process Monitor	Yes		
Wash Level	5		
Operating Water Pressure (Bar)	0.5 ~ 8		

3. PARTS NAME



- 1. Control Panel
- 2. Door Handle
- 3. Front Cover
- 4. Lower Cover
- 5. Display Window
- 6. Power Button
- 7. Drain Hose
- 8. Inlet Hose
- 9. Power Cord
- 10. Adjustable Leg

- 11. Upper Rack
- 12. Cutlery Rack
- 13. Detergent And Rinse Aid Dispenser
- 14. Vapor Vent Cover
- 15. Upper Spray Arm
- 16. Lower Spray Arm
- 17. Filter ASM
- 18. Lower Rack
- 19. Salt Container Cap
- 20. Cutlery Rack

Accessory



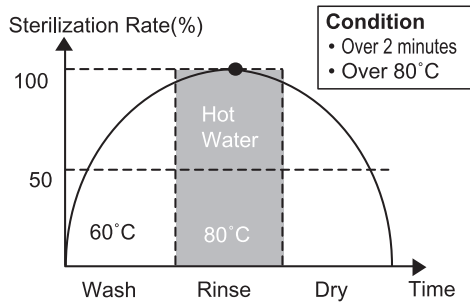
Funnel

※ The appearance and specifications may vary without notice.

4. FEATURES & TECHNICAL EXPLANATION

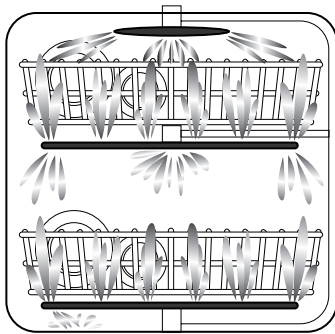
4-1 New Technology Introduction

4-1-1. High Temperature Rinsing (Extra Hot function)



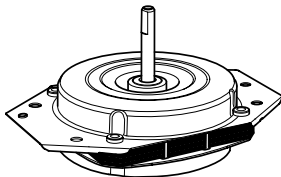
- During the high temp. Rinse course, water temperature in an dishwasher reaches 80°C, considerably higher than the average rinse temperature in conventional dishwashers(65°C). This is how Rinse 80°C can eliminate some bacteria such as salmonella.

4-1-2. Dual Wash



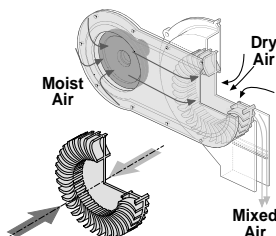
- With the Dual Wash System you can select different water pressure levels not only for the lower basket, but also for the upper basket. So you can get strong water pressure for the big pots in the lower basket and soft water pressure to protect your delicate or valuable dishes in the upper basket.

4-1-3. Slim Direct Inverter Motor



- Newly introduced Slim Direct Inverter motor is inverter-controlled. Speed is controlled based on program selection. It also offers high energy efficiency to minimize energy loss.

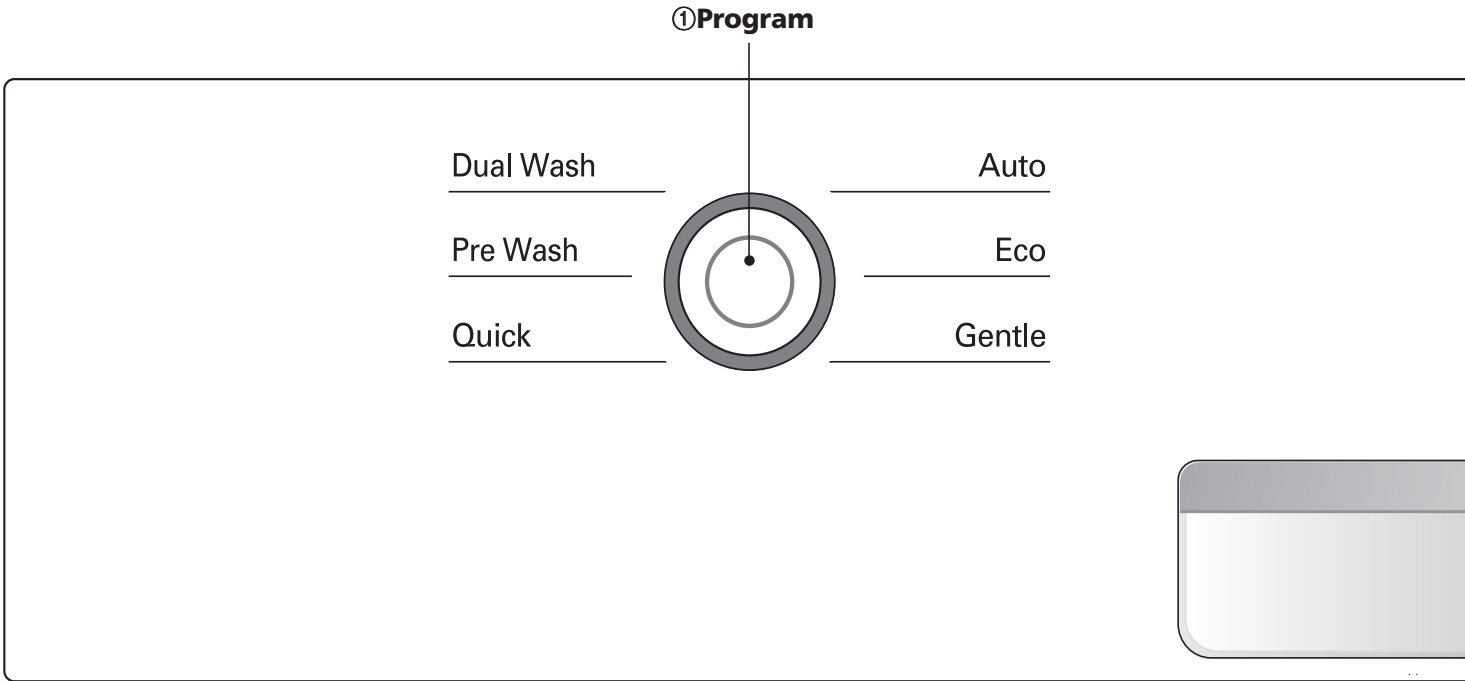
4-1-4. Hybrid Drying System



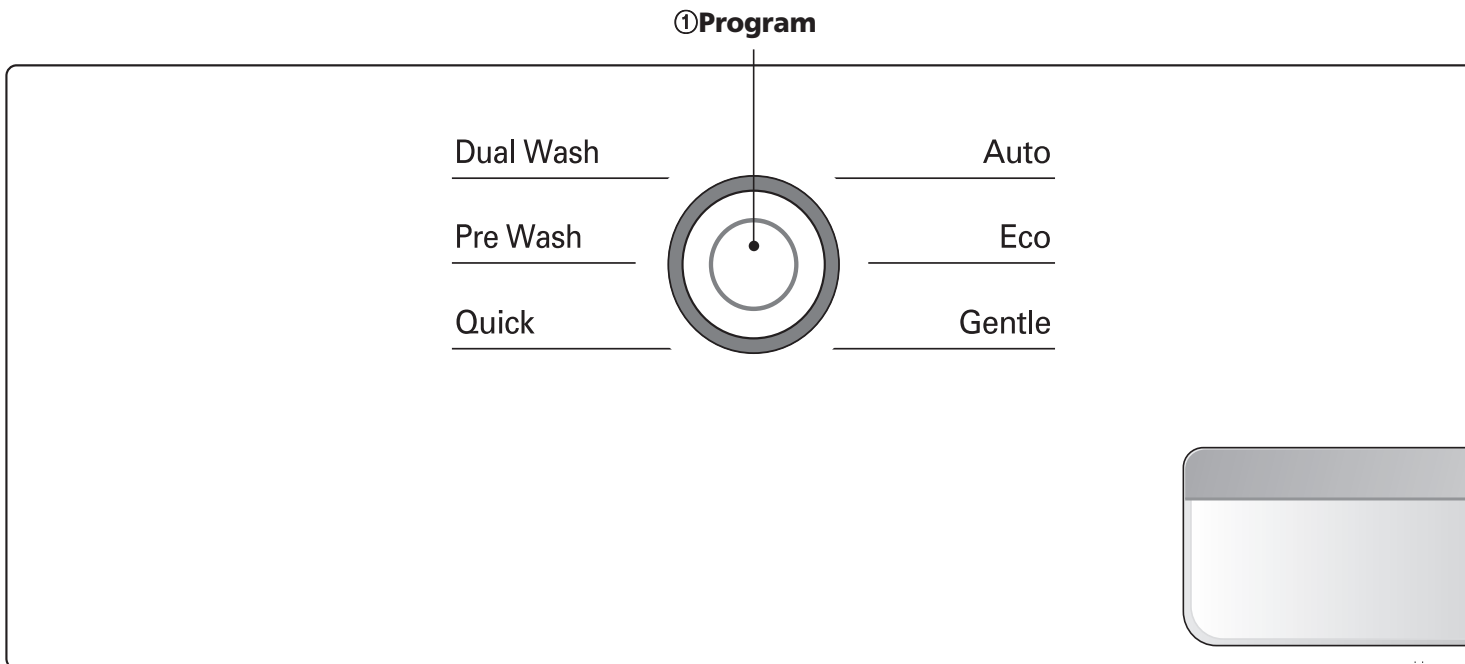
- This is one of the best performance solutions for drying dishes because it minimizes venting humid air to the outside of the dishwasher. In addition, this system ensures better drying results compared to the condensing drying system.

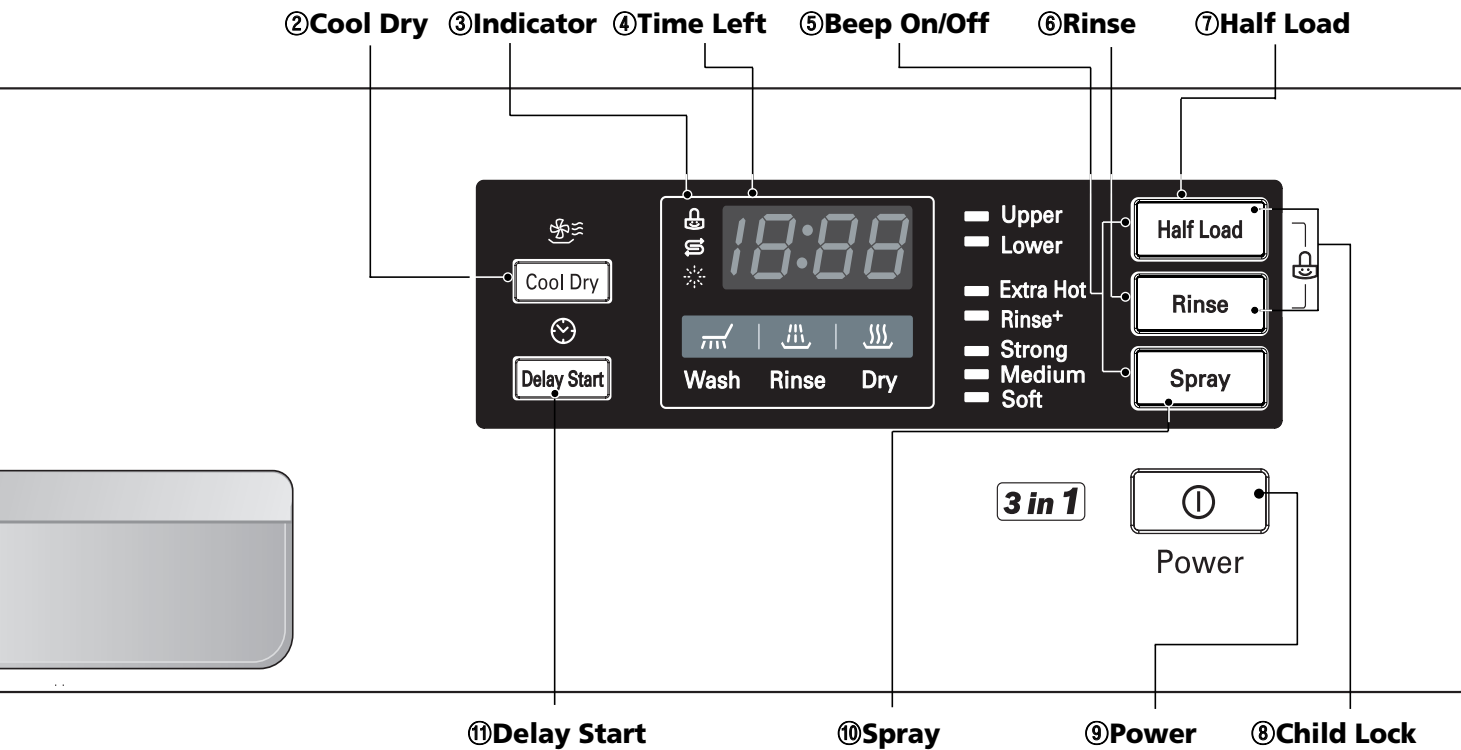
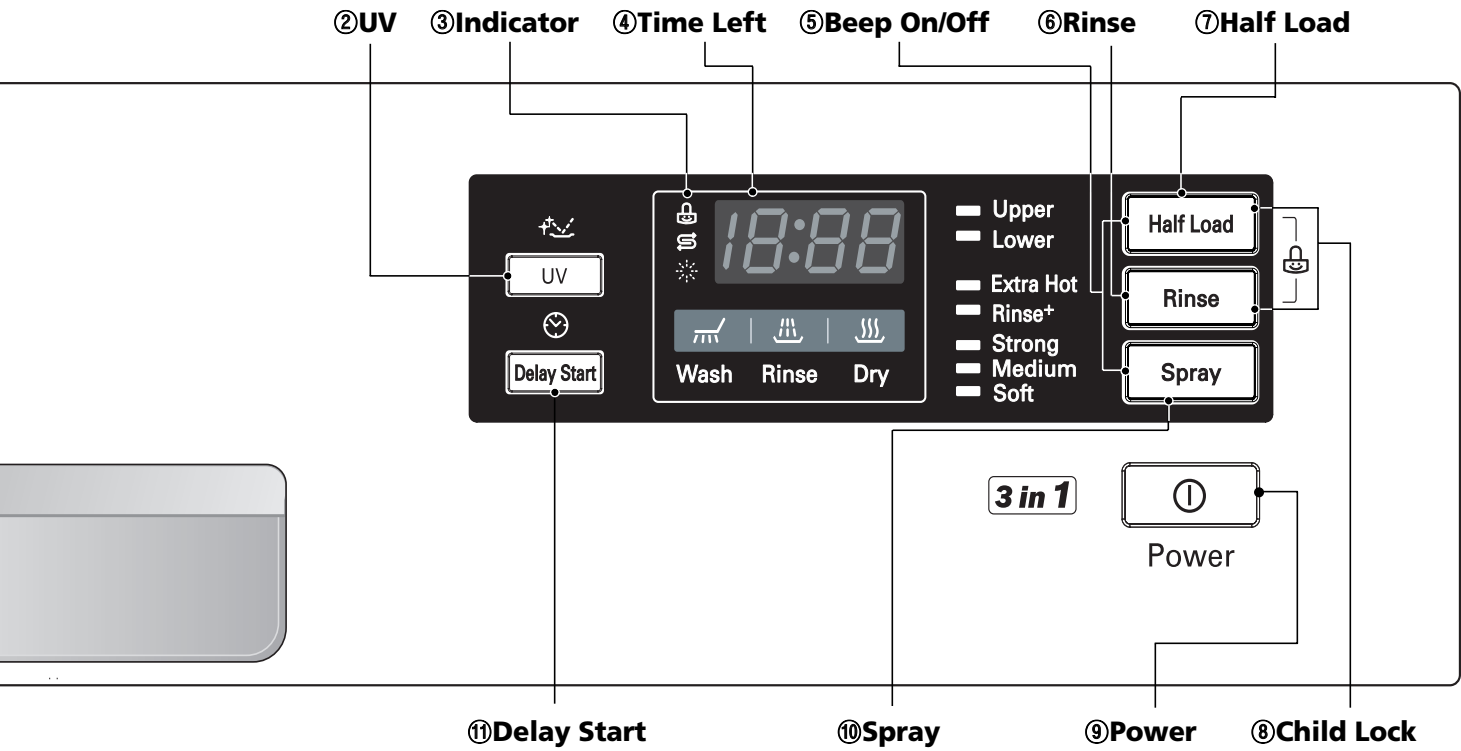
4-2 Display Panel

■ MODEL : D1420 / D1423 Series



■ MODEL : D1421 / D1422 Series





① Program

- When you want to select program, press this button.

② UV

- If you want to sterilize the dishes, press **UV** button.
- After drying cycle, sterilizer will be performed by **UV** lamp.
- At this time, “St” code is displayed in display window.

Cool Dry

- When you want better drying performance, press this button.
- This process is not part of the program.
- After drying cycle, the fan will operate for a few more minutes to diminish any remaining moisture. At this time, “Cd” code is displayed in display window.
- If you want, you can open the door and unload the dishes at any time.

③ Indicator



- Child Lock.
- Refill with special salt.
- Refill with rinse aid.

④ Time Left

- Before starting, the display window shows the running time of the selected program.
- After starting, the display window shows the remaining time.
- If the dishwasher has a trouble, the trouble type is displayed. “OE”, “FE”, “IE”, “EI”, “HE”, “CE”, “LE”, “tE”
- If this error letters are displayed, please refer to the trouble shooting guide page 25 and follow the guide.

⑤ Beep On/Off

- The dishwasher must be switched on.
- The beep on/off function can be set by pressing the **Half Load** and **Spray** button simultaneously for a few seconds. Then, a “On” will appear in the display.
- The beep on/off function is automatically canceled when power failure occur.

⑥ Rinse

- Repeated pressing of the **Rinse** button will select Extra Hot, Rinse+, Extra Hot & Rinse+.
- If you select the **Extra Hot** function, the operating temperature will be up to 80°C. (Dual wash, Auto, Eco)
- When you select **Rinse+**, an additional rinse cycle is added.

⑦ Half Load

- In case of small load, use upper or lower rack only to save energy.
- With each press, can select **Upper** or **Lower** rack only.
- In case you don't select this button, the machine always works vario washing, which operate upper and lower spray arm alternately.

⑧ Child Lock

- Used to lock or unlock the control buttons to prevent all the setting from being changed by a child.
- This function is automatically canceled when power failure occur.
- For locking/ unlocking, press **Half Load** and **Rinse** button for a few seconds simultaneously.

⑨ Power

- For operating, press this button first for power on.
- After operating, this button automatically switches off for safety and energy saving.
- In case of irregular surge disturbance to the machine, the power may be automatically turned off for safety.

⑩ Spray

- With each press, the level of water jet is changed to **Strong**, **Medium** and **Soft** in a sequence.

⑪ Delay Start

- If you want to delay the start of selected program, press this button.
- Pressing this button will increase time by 1 hour.
- The delay start time can be adjusted from 1 hour to 19 hours.

4-3 TEST MODE

CHECK PROGRAM(START IN THE STATE OF THE CLOSED DOOR)

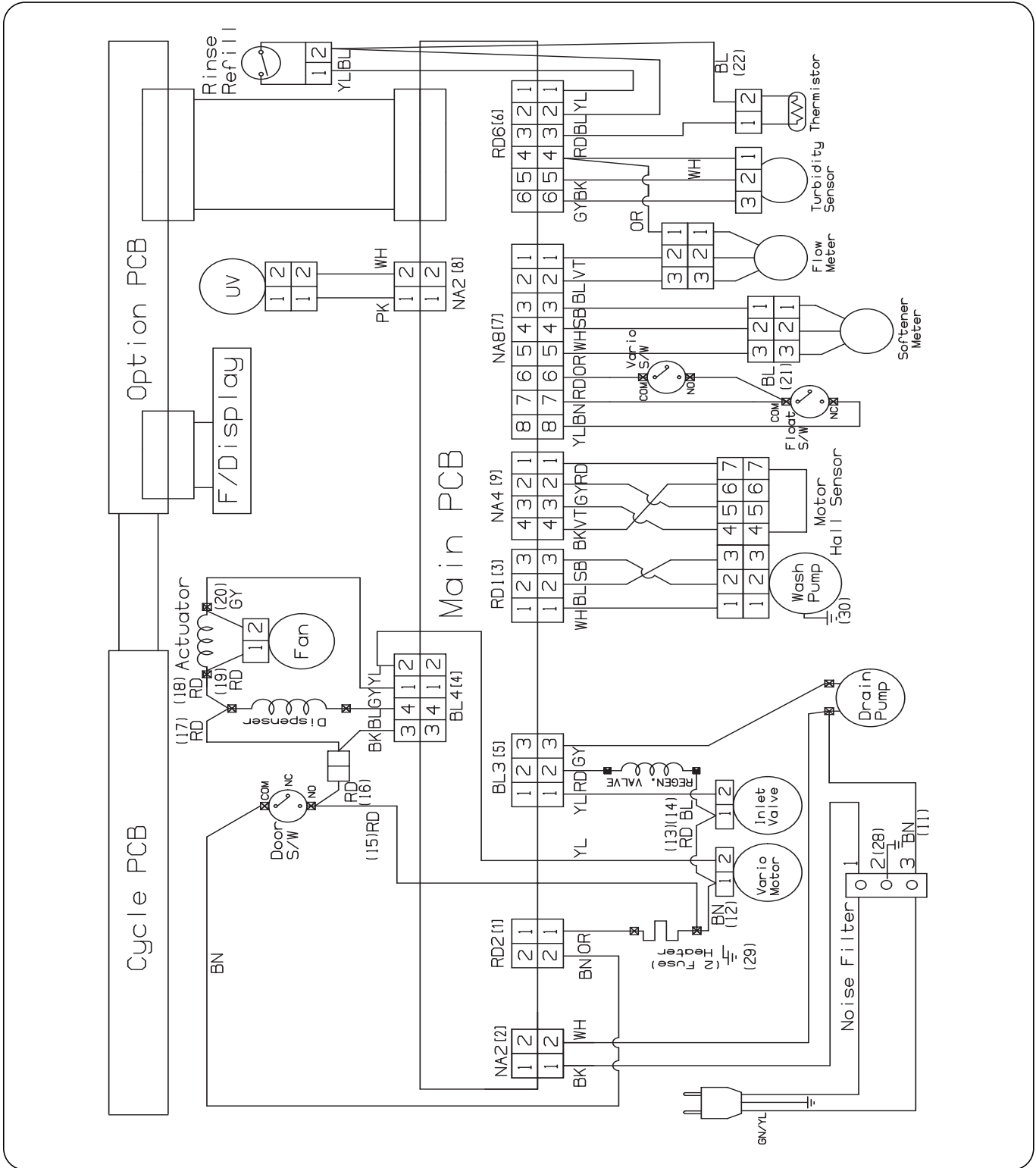
BUTTON	The number of pushing button	DISPLAY	Checking points	
			Load	LED
Half Load + Rinse + POWER Button	1 TIME	1n0H : 1U00		All LEDs are lighting
Program Button	1 TIME	11 : 11		Dual Wash
Cool Dry or UV Button	1 TIME	12 : 22		Cool Dry or UV
Delay Start Button	1 TIME	13 : 33		Delay Start
Half Load Button	1 TIME	14 : 44		Half Load
Rinse Button	1 TIME	15 : 55		Rinse
Spray Button	1 TIME	Sensing value	Turbidity Sensor	Auto, Eco, Gentle, Quick Pre Wash, Dual Wash
	2 TIME	n02	Washing Motor	UV
	3 TIME	n03	Drain Pump	Delay Start
	4 TIME	Frequency	Inlet Valve	Child Lock, Salf Refill, Rinse Refill
	5 TIME	n05	Dispenser	Wash
	6 TIME	n06	Heater(for 10 sec.)	Rinse
	7 TIME	Temperature	Fan Motor	Dry
	8 TIME	n08	Regeneration Valve	Upper
	9 TIME	n09	UV Lamp (UV lamp use only)	Lower
	10 TIME	n0A	Vario motor → Vario S/W OFF	Extra Hot, Rinse+
	11 TIME	n : 0b	Vario motor → Vario S/W ON	Strong, Medium, Soft
	12 TIME	n : 0C	AUTO OFF S/W	Operate C1 mode(for 1min.) → Drain(for 42sec.) → Supply water → Push Spray Button (Auto Off)

Micro S/W must be ON to operate HEATER

※ CHECK MODE

BUTTON	OPERATION
Delay Start + Power	Buzz On/Off
Program Button + Half Load	Display Inner Temperature
Program Button + Delay Start	Display Water Supply Frequency
Program Button + Spray	Display Soil Index
① Cool Dry or UV + Power	* Select Hardness Level setting mode (Default :H4)
② Cool Dry or UV	* Change hardness level (H4 → H5 → H6 → H7 → H0 → H1 → H2 → H3 → H4)
③ Spray	* Set Hardness Level

5. WIRING DIAGRAM

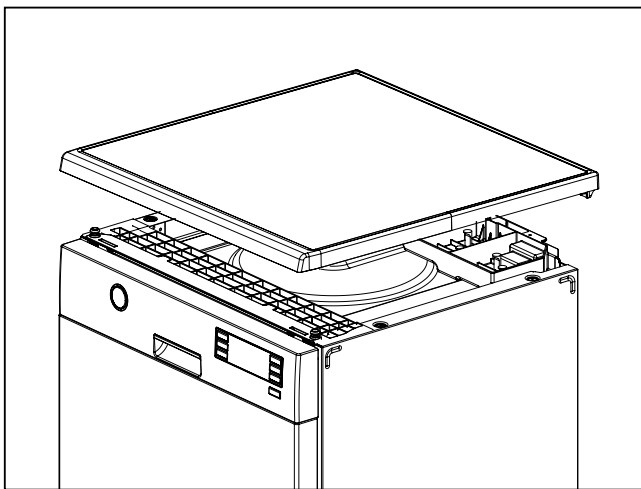


7. HOW TO DISASSEMBLE

BEFORE DISASSEMBLING THE DISHWASHER ;

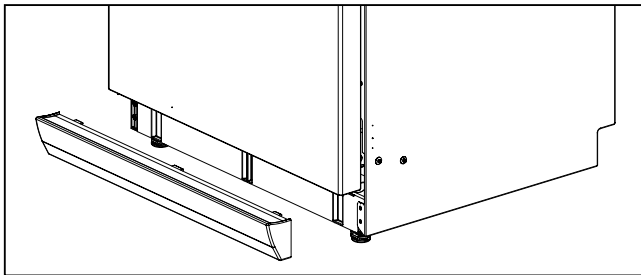
- 1) Remove the plug from electric outlet to avoid electric shock.
- 2) Close the Water Tap(faucet).
- 3) Remove all dishes and items in the dishwasher.
- 4) Remove the Lower Rack and the Upper Rack.
- 5) In case of the water softner assembly model, open the water softner cap to flow out the water to sump and drain to avoid the floor wet.
- 6) If necessary, remove the inlet hose and drain hose to avoid the hose damages.
- 7) Prepare some towels to avoid floor wet by the water left in the dishwasher.

7-1. FULL DISASSEMBLE

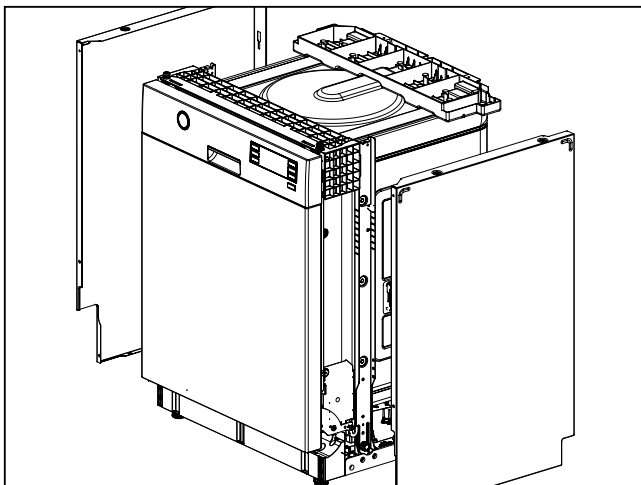


1. Top Table

- 1) Remove the rear 2 screws.
- 2) Pull and lift the top table.

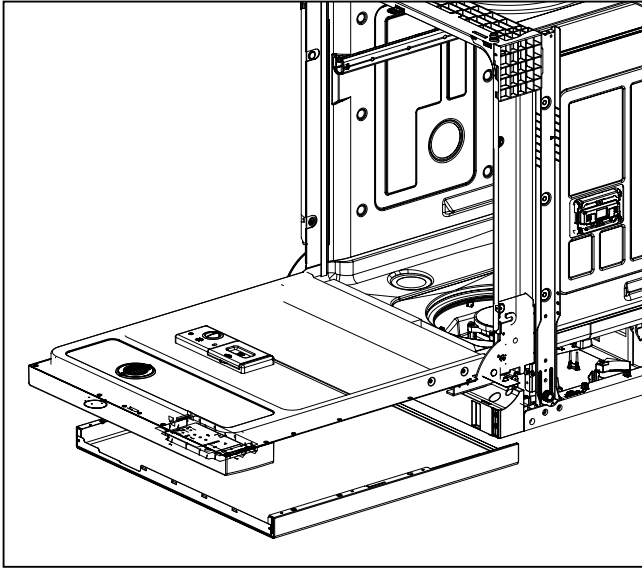


2. Low Cover



3. Side Cabinet-R/L and Tub Felt

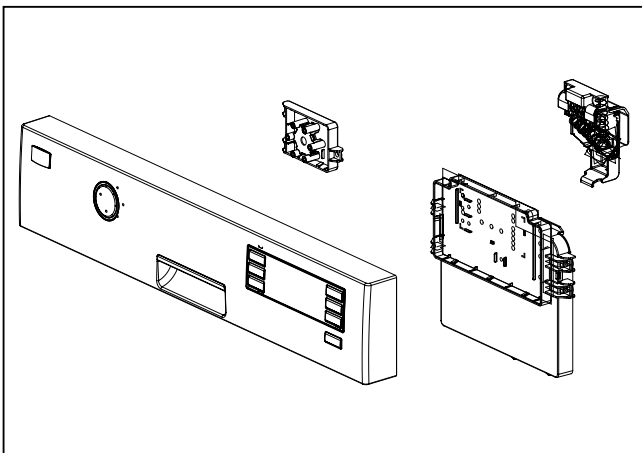
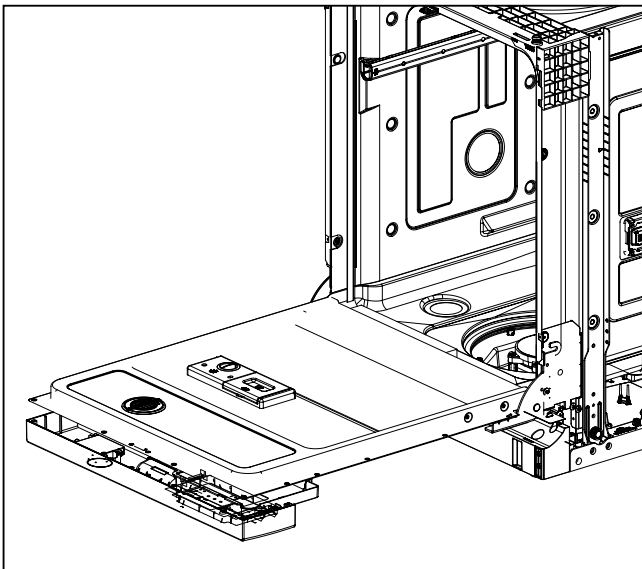
- 1) **Cabinet-R**
 - ① Remove front 4 screws.
 - ② Remove rear 3 screws.
- 2) **Cabinet-L**
 - ① Remove front 4 screws.
 - ② Remove rear 3 screws.
- 2) **Tub Felt**
 - ① Pull the Tub Felt.



4. Door Assembly

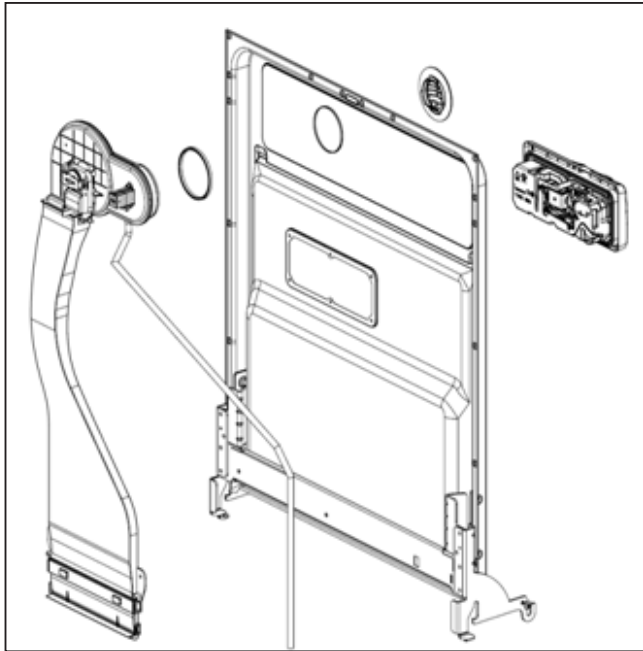
1) Front Cover

- ① Open the door.
- ② Remove 4 screws(long Type, stainless).
- ③ Remove 6 screws(stainless).
- ④ Close the door slowly and remove front cover downwards.



2) Control Panel Assembly

- ① Open the door.
 - ② Remove 2 screws(stainless).
 - ③ Remove wire connection.
- Be sure the wiring should not be changed in reassembling.
- ④ Remove 3 screws for Latch assembly
 - ⑤ Remove 7 screws for Controller.

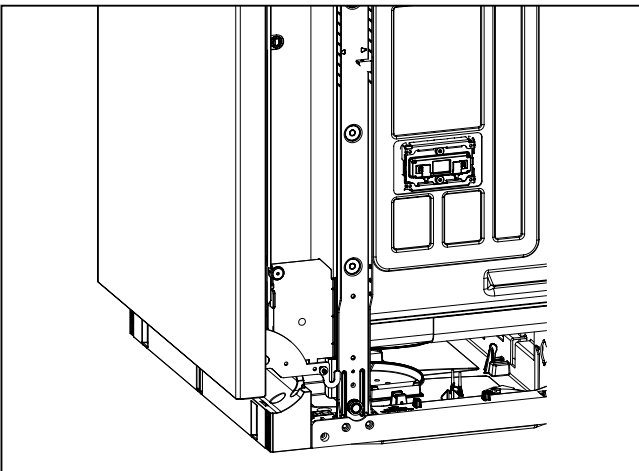


3) Fan

- ① Open the door.
- ② Remove the wire connections.
- ③ Turn the Inner Cover counterclockwise.
- ④ Remove the air duct.

4) Detergent Dispenser

- ① Close the door.
- ② Remove the wire connections.
- ③ Remove 6 screws with brackets.
- ④ Push the Detergent slowly pulling up the Flange by Standard Screwdriver.

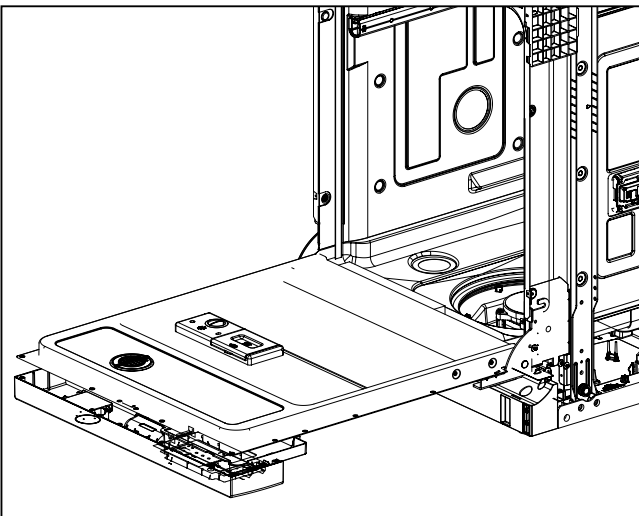


5) Door Spring (Right & Left)

- ① Push the Spring upwards and take it off from the Hinge Bracket.

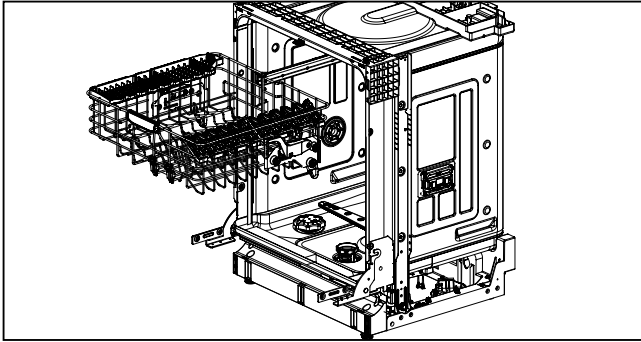
Be careful not to be injured by the sharp edge of Tub.

- ② Take off the Hinge Link from the Hinge.



6) Door Liner

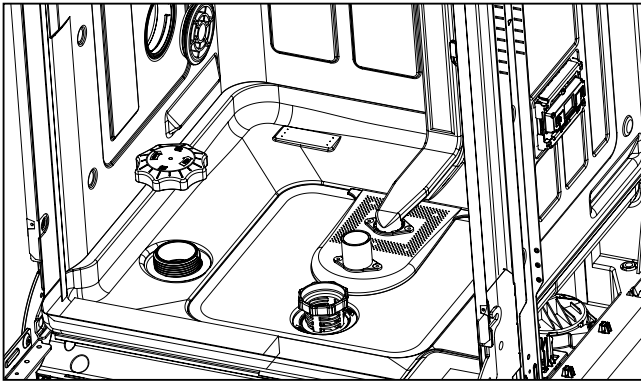
- ① Open the door.
- ② Remove the wire connections.
- ③ Pull the Door liner upwards.



5. Tub assembly

1) Rack

- ① Remove the Upper rack and Lower rack.

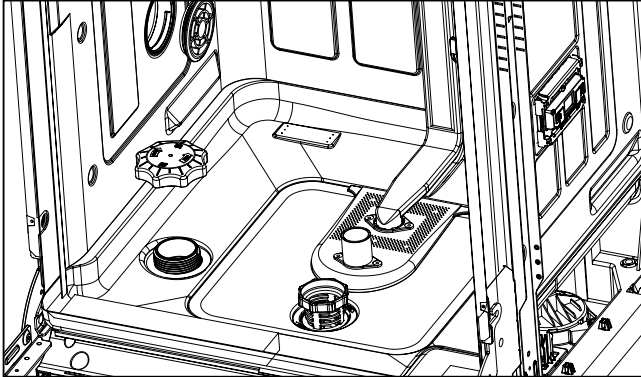


2) Air guide Nut and Water softner Cap&Nut

- ① Turn the Air guide Nut counterclockwise. (Special tool might be needed.)

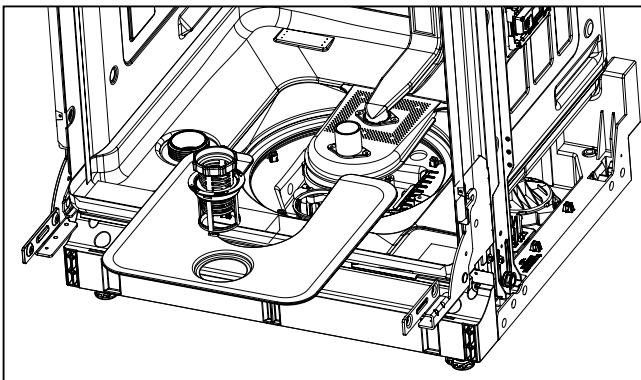
Be careful the rubber packing of air guide assembly should not be lost.

- ② Turn the Water softner Cap counterclockwise.



3) Nozzle

- ① Pull up the nozzle.

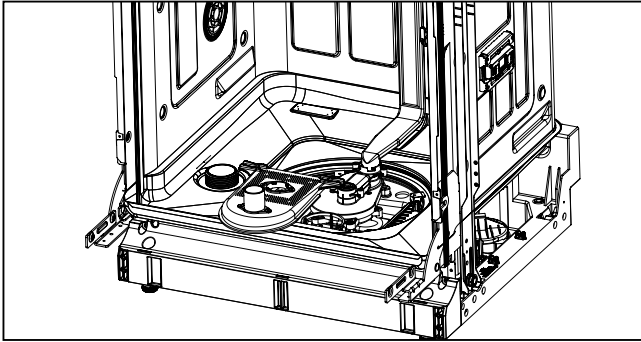


4) Filter Assembly

- ① Turn inner filter counterclockwise and lift inner filter and middle filter.

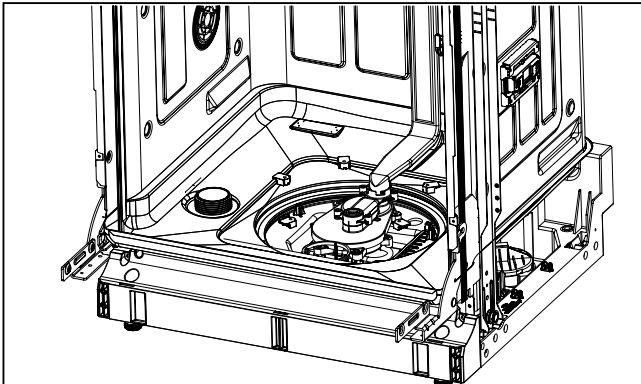
You can disassemble inner filter and middle filter by pulling opposite direction.

- ② Lift up main filter.
- ③ Lift up micro filter.



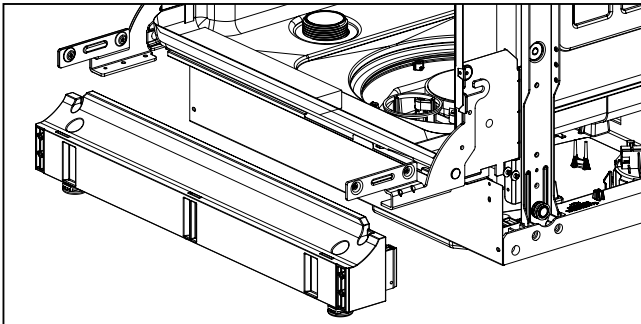
5) Nozzle Holder

- ① Disconnect the water guide
- ② Remove 4 screws and lift it up



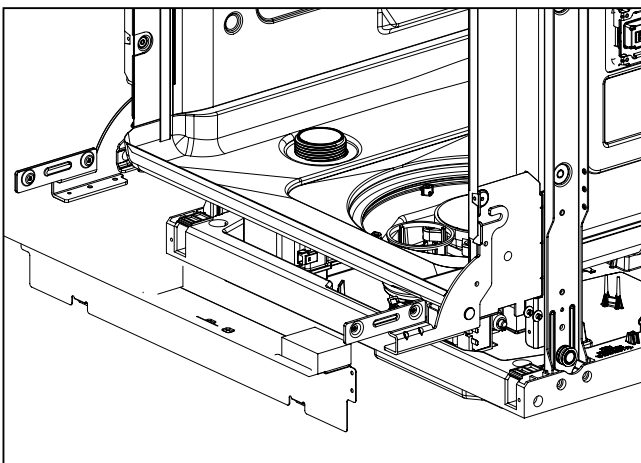
6) Sump Holder

- ① Remove the Sump Holder(5EA).



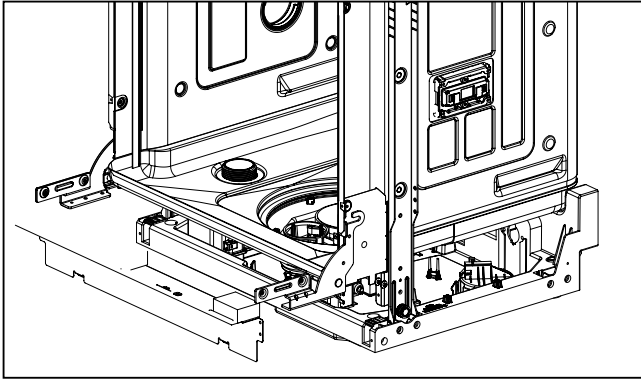
7) Base spacer

- ① Remove front 2 screws.
- ② Remove side 2 screws.
- ③ Lift the front side of dishwasher and pull the base spacer forward.



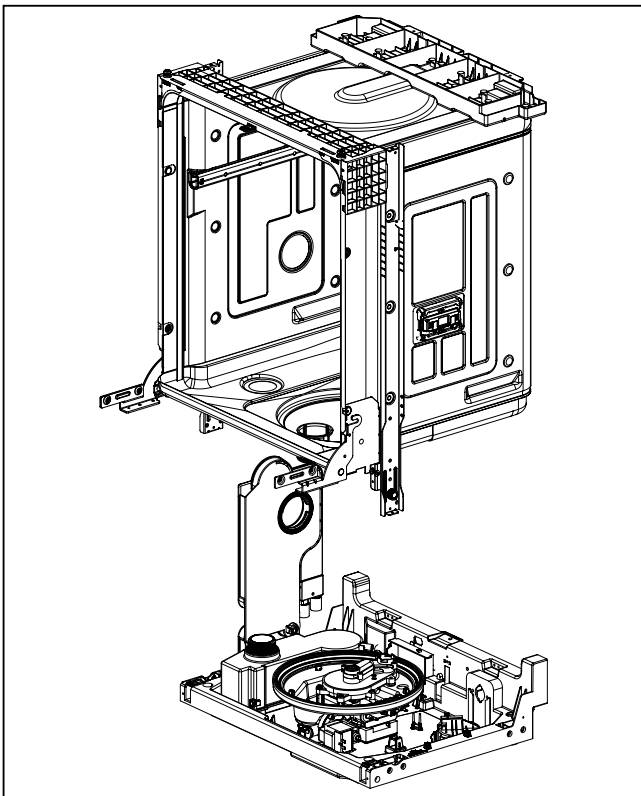
8) Lower Frame

- ① Remove 2 screws.
- ② Press the holder hook as shown in figure.



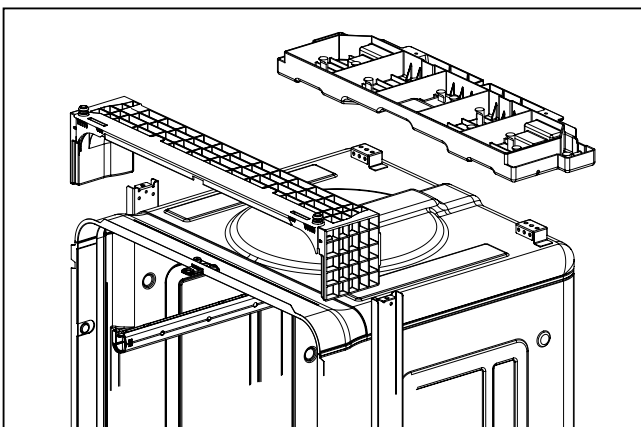
9) Tub sub Assembly

- ① Remove side 4 screws.
- ② Remove 3 Earth screw of right side.
- ③ Remove rear 4 screws.



- ④ Lift tub assembly upward.
(Be sure water softener is not blocked.)

Be careful not to be injured or scratch floor by the sharp edge of tub.



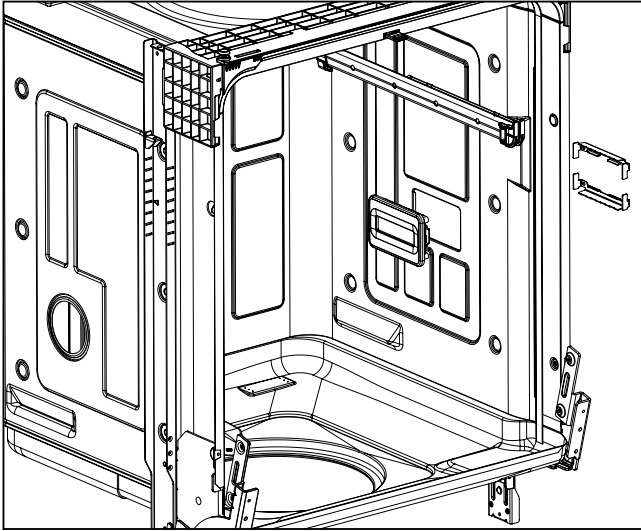
6. Tub sub Assembly

1) Top Frame

- ① Remove front 2 screws.
- ② Remove side 2 screws.
- ③ Lift up top frame.

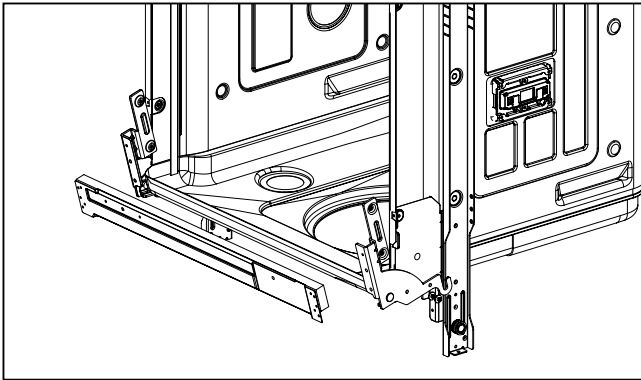
2) Balance Weight

- ① Remove rear 4 screws.
- ② Lift up balance weight.



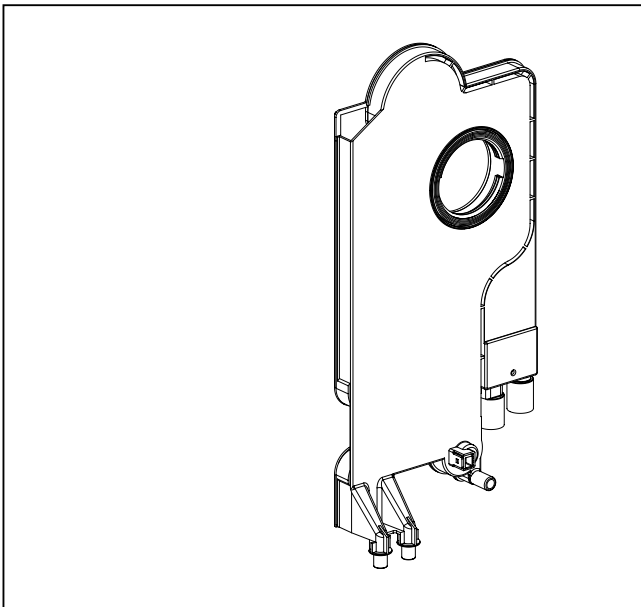
3) UV Lamp(Limited on some models.)

- ① Remove the wire connections.
- ② Remove side 4 screws.
- ③ Push the UV Lamp slowly.



4) Door Bracket

- ① Remove 4 screws.
- ② Lift up ward.

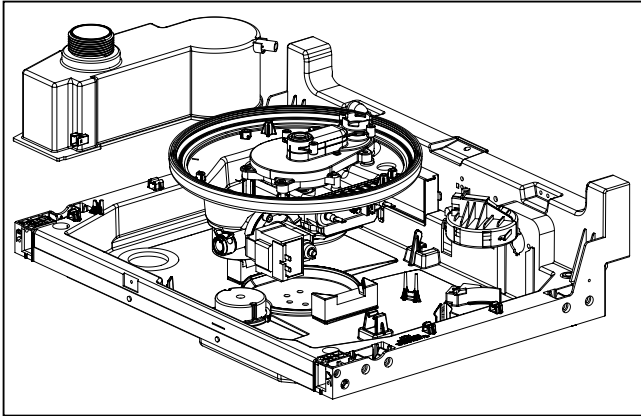


7. Air Guide Assembly

- ① Lift it upward to disconnect from Water Softner.
- ② Disconnect the wiring connection.
- ③ Remove 3 hoses assembly.

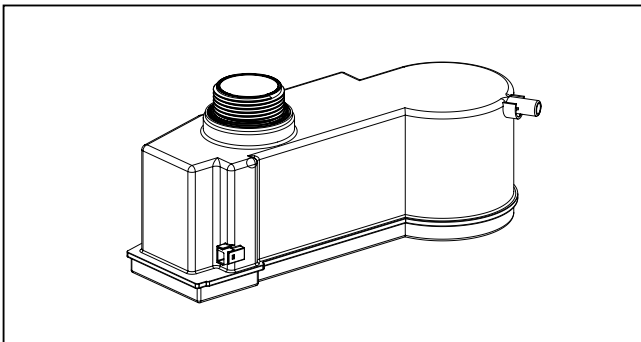
Be careful the o-ring should not be lost.

Be careful not to wet the floor by the water left in the hose.



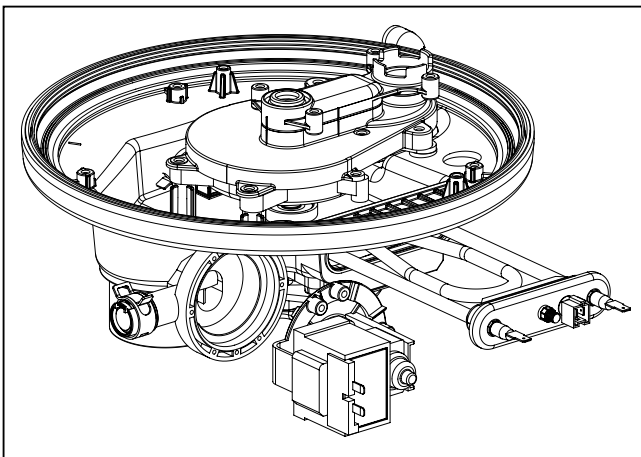
8. C-Base Assembly

- ① Remove the wire connections.
 - ② Lift them upward.
- Be careful not to wet the floor by the water left in the sump
- ③ Pull out the float switch with pressing downward softly.(not on all models)
 - ④ Detach the washing motor and heater assembly by pulling opposite direction to sump.
 - ⑤ Remove the 3 screw for drain motor.



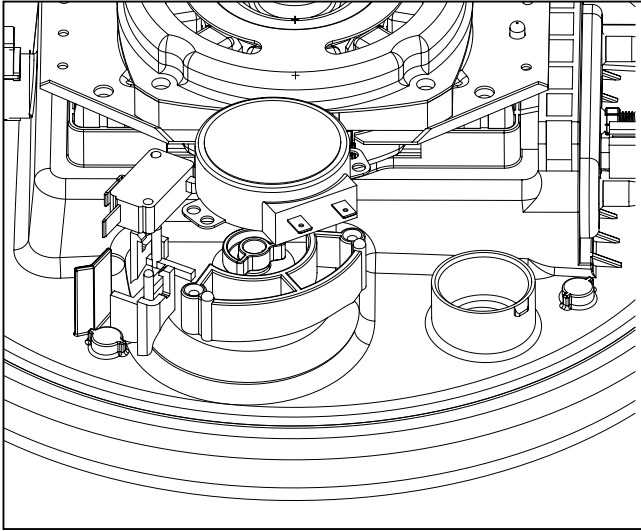
1) Water softner

- ① Remove the hose assembly.
 - ② Lift it upward.
- Be careful not to wet the floor by the water left in the water softner.
- ③ You can disassemble the solenoid valve by unscrew the 2 screw.
- Be sure not to lost the spring and bobbin.



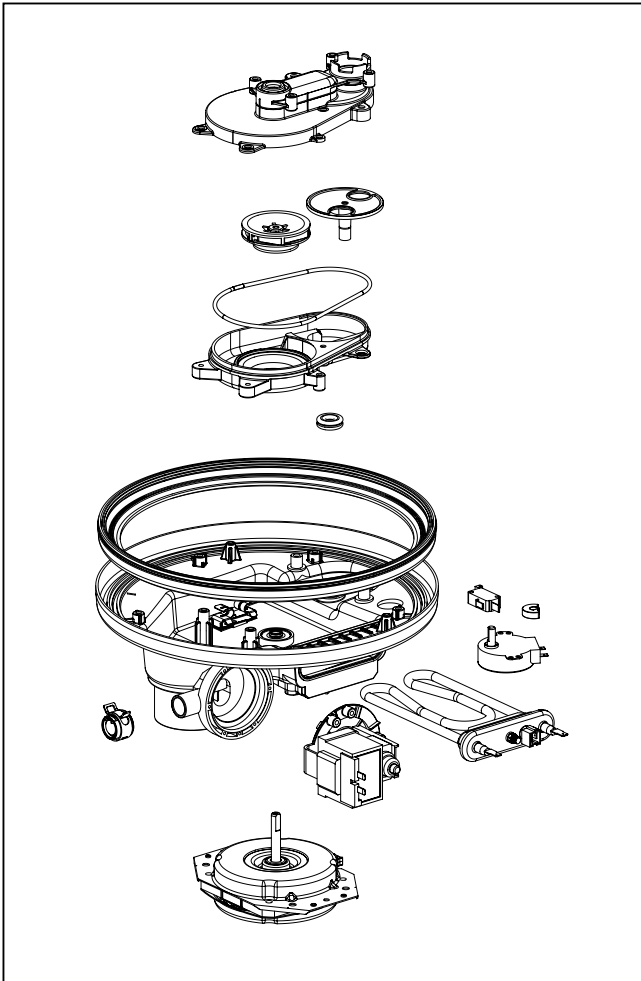
2) Heater & Drain pump

- ① Remove the wire connections.
- ② Pull the Heater out of the Sump after releasing the nut.
- ③ Remove 3 screw to disassemble the Drain pump.



3) Vario Motor & Soil sensor

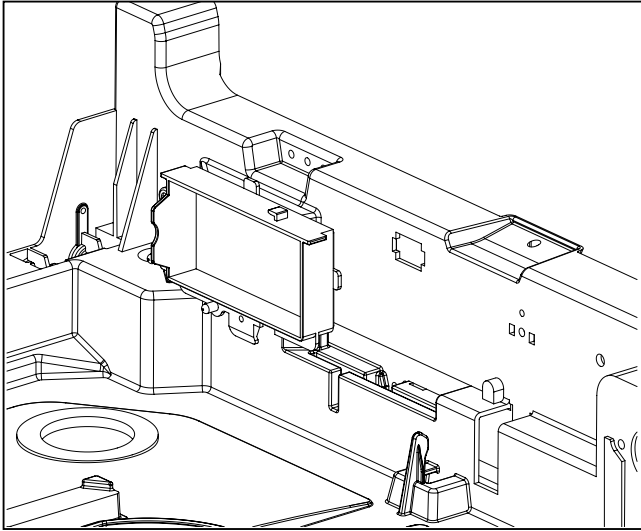
- ① Remove the wire connections.
- ② Remove 2 screws for Vario Motor.
- ③ Pull the Vario Motor, Soil Sensor and Micro switch.



4) Impeller & Washing Motor

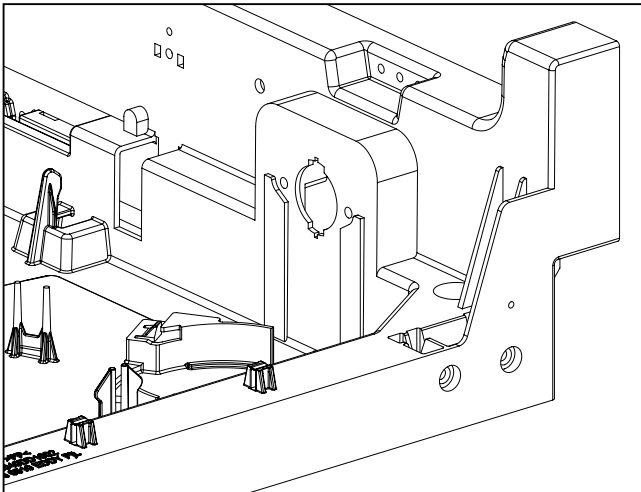
- ① Remove the wire connections.
- ② Remove 10 screws to disassemble the Impeller and Check valve.
- ③ Remove 4 screw to disassemble the Washing Motor.

When you reassemble the Sump Assembly, be careful not to kink, tear and take off the seal.



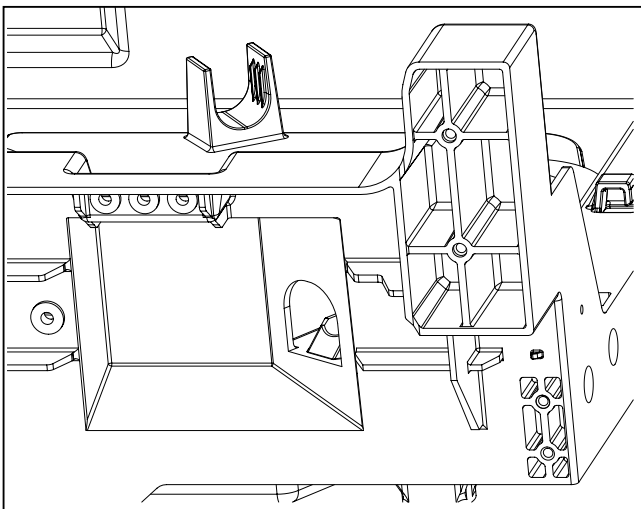
5) Power cord assembly & Noise Filter

- ① Turn the power cord assembly 90 and take it off.
- ② Remove 2 screw.



6) Aquastop

- ① Press the holder hook as shown in figure.
- ② Pull the hose assembly.



7) Drain Hose

- ① Press the rear side hook.
- ② Pull the holder forward.
- ③ Pull the holder upward.

7-2. DISASSEMBLE C-BASE ASSEMBLY

Be careful not to be injured by the sharp edge of tub.

1. Top Plate

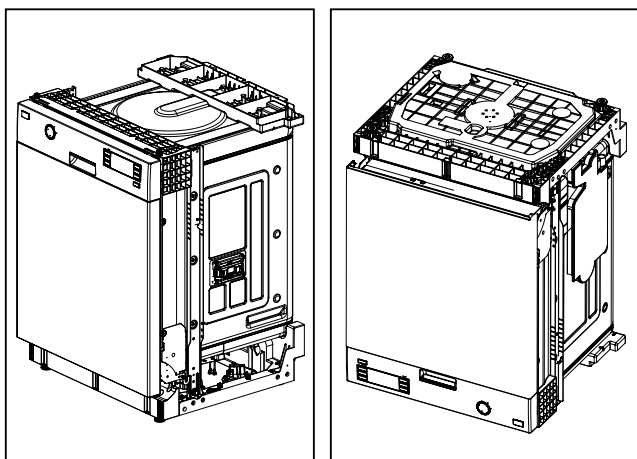
- See 7-1. 1. (Page 16)

2. Low Cover

- See 7-1. 2. (Page 16)

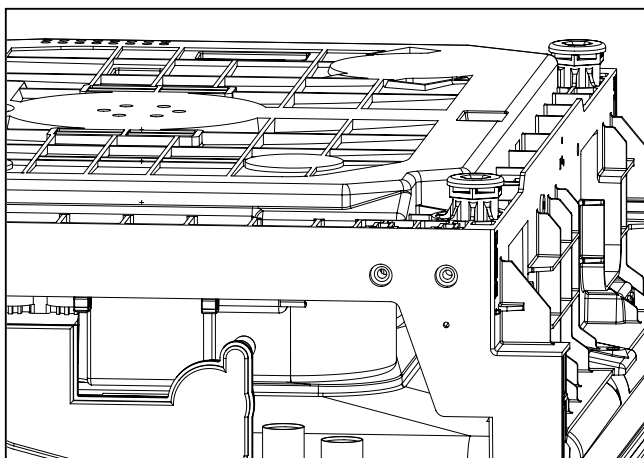
3. Cabinet-R/L

- See 7-1. 3. (Page 16)



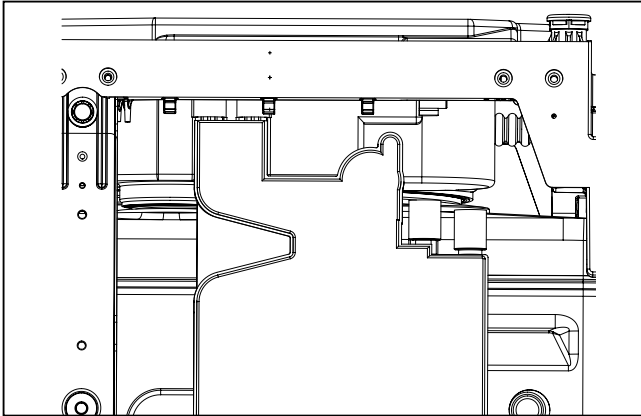
4. Put the Dishwasher upside down.

Be careful not to wet the floor by the water left in the air guide.



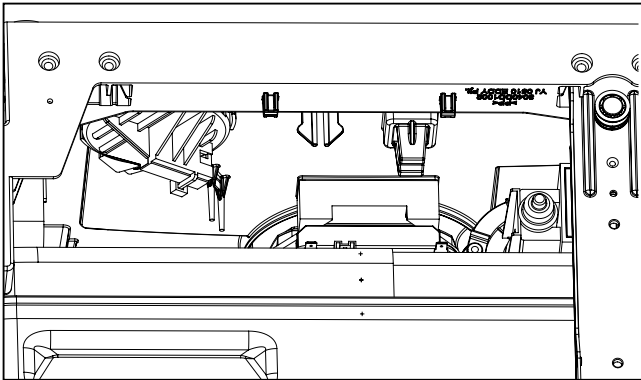
5. Air Guide

- ① Disconnect 1 hoses assembly.



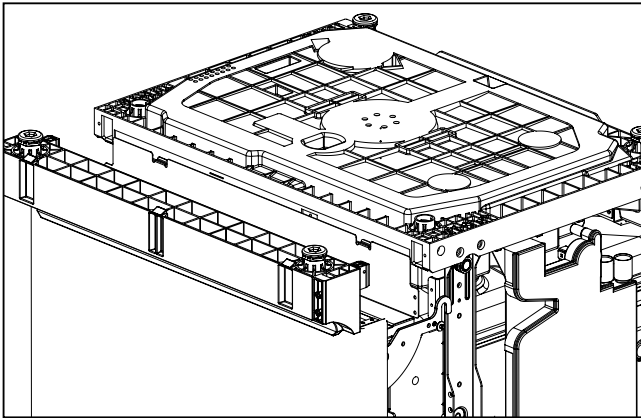
6. Disconnect the wire

- ① Remove the wire from the wire hook at the base.
- ② Remove 3 Earth screws of right side.
- ③ Remove the Float switch.



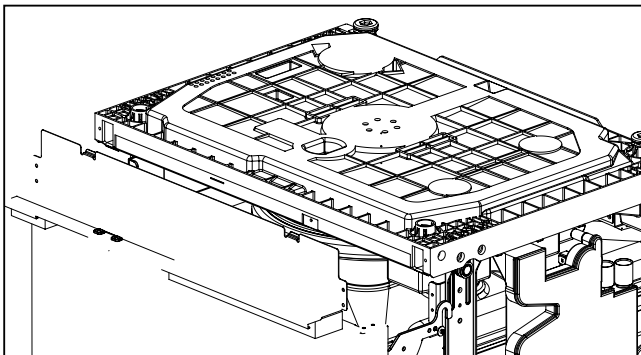
7. Base spacer

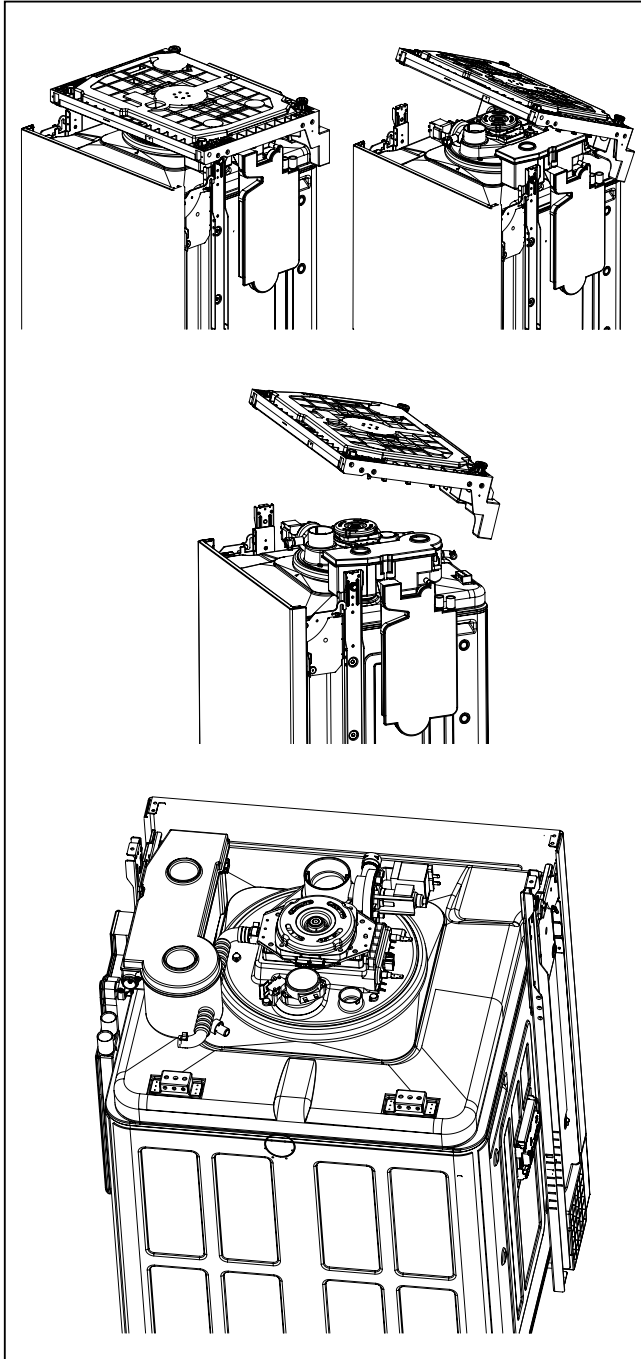
- ① Remove front 2 screws.
- ② Remove side 2 screws.
- ③ Lift the front side of dishwasher and pull the base spacer forward.



8. Lower Frame

- ① Remove 2 screws.
- ② Press the holder hook as shown in figure.





9. Remove the side screws

- ① Remove side 4 screws.
- ② Remove rear 4 screws.
- ③ Remove 3 Earth screws of right side.
- ④ Lift base upward slightly
(You can't lift up base perfectly because of some parts connecting to base.)

10. Disconnect the connecting points between tub and base




- ① Disconnect noise filter.
(Not on all models)
- ② Disconnect of power cord assembly.
- ③ Disconnect wire from the Aquastop.
※ Now, you can remove the base from the tub perfectly.





11. C-Base Assembly

- ※ You can repair the parts in the C-Base like heater, washing motor, drain motor etc. you may refer to 7-1. 8. 1)~10)
- ※ Don't disassemble sump by 7-2.
If you want to disassemble the sump, follow 7-1.

8.TROUBLE SHOOTING METHODS

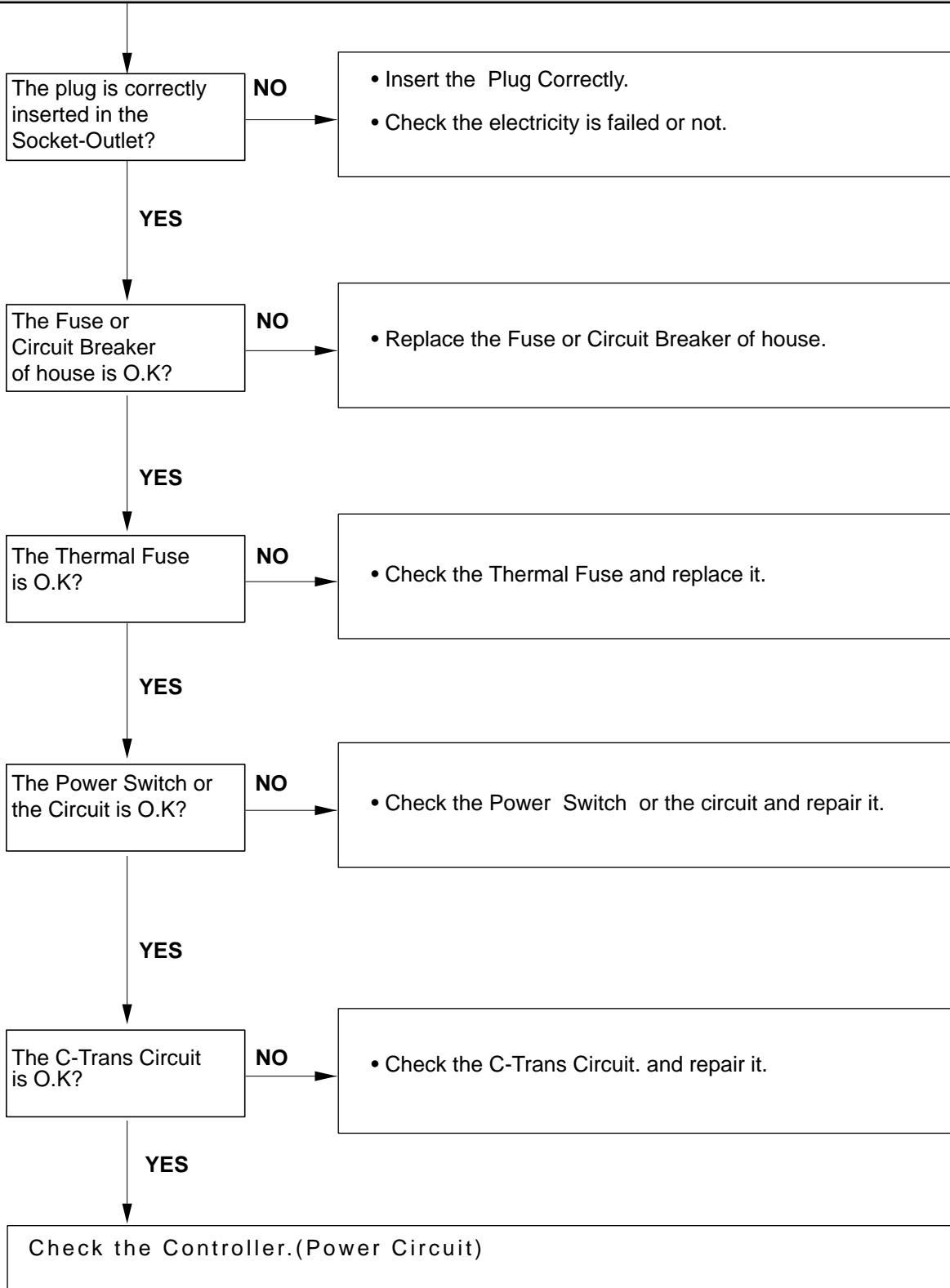
A. TROUBLE SHOOTING ACCORDING TO DISPLAYED ERROR MESSAGE

ERROR MESSAGE	POSSIBLE CAUSE FOR ERROR OCCURRENCE	REMEDY
<p>INLET ERROR</p>  <p>displayed</p> <p>Condition Not reached to the normal water level in spite of 10 min. water supply</p>	<ul style="list-style-type: none"> • The Water Tap is not opened. • The Inlet Hose is kinked. • The Filter of inlet valve clogged by impure water. • The Inlet Water Valve is normal ? • The water pressure is very low. (below 0.5 kgf/cm²) • Inlet valve is blocked by safety device for leakage sensing.(In case of Inlet Valve) 	<ul style="list-style-type: none"> • Open the Water Tap. • Repair the Inlet Hose. • a) Close the Water Tap. • b) Unscrew the Inlet Hose (Inlet Valve side) • c) Clean the Filter of Inlet Valve. • Replace or repair the Inlet Valve. • Check the water remain on the base. <ol style="list-style-type: none"> 1) Check the point of damages and repair or replace the related parts. 2) Disconnect the inlet hose to dishwasher to unlock the safety valve.
<p>DRAIN ERROR</p>  <p>displayed</p> <p>Condition Not fully drained out in spite of 5 min. drain operation</p>	<ul style="list-style-type: none"> • The Filter clogged. • The Drain Hose kinked or blocked. • The Drain Pump/Motor or circuit is troubled. 	<ul style="list-style-type: none"> • Clean the Filter. • Remove the cause of kink or block. • Replace the Drain Pump/Motor or repair the Circuit.
<p>LEAKAGE ERROR</p>  <p>displayed</p> <p>Condition The water level in Tub goes down during operation</p>	<ul style="list-style-type: none"> • Water leakage in Hose connections. • Water is leaked by damages. • Impeller of the washing Pump is worn away. • The Thermal Protector of the washing motor is functioned. 	<ul style="list-style-type: none"> • Replace the connections of Hose. • Check the point of damages and repair or replace the related parts. • Replace the washing pump. • Check the applied voltage.

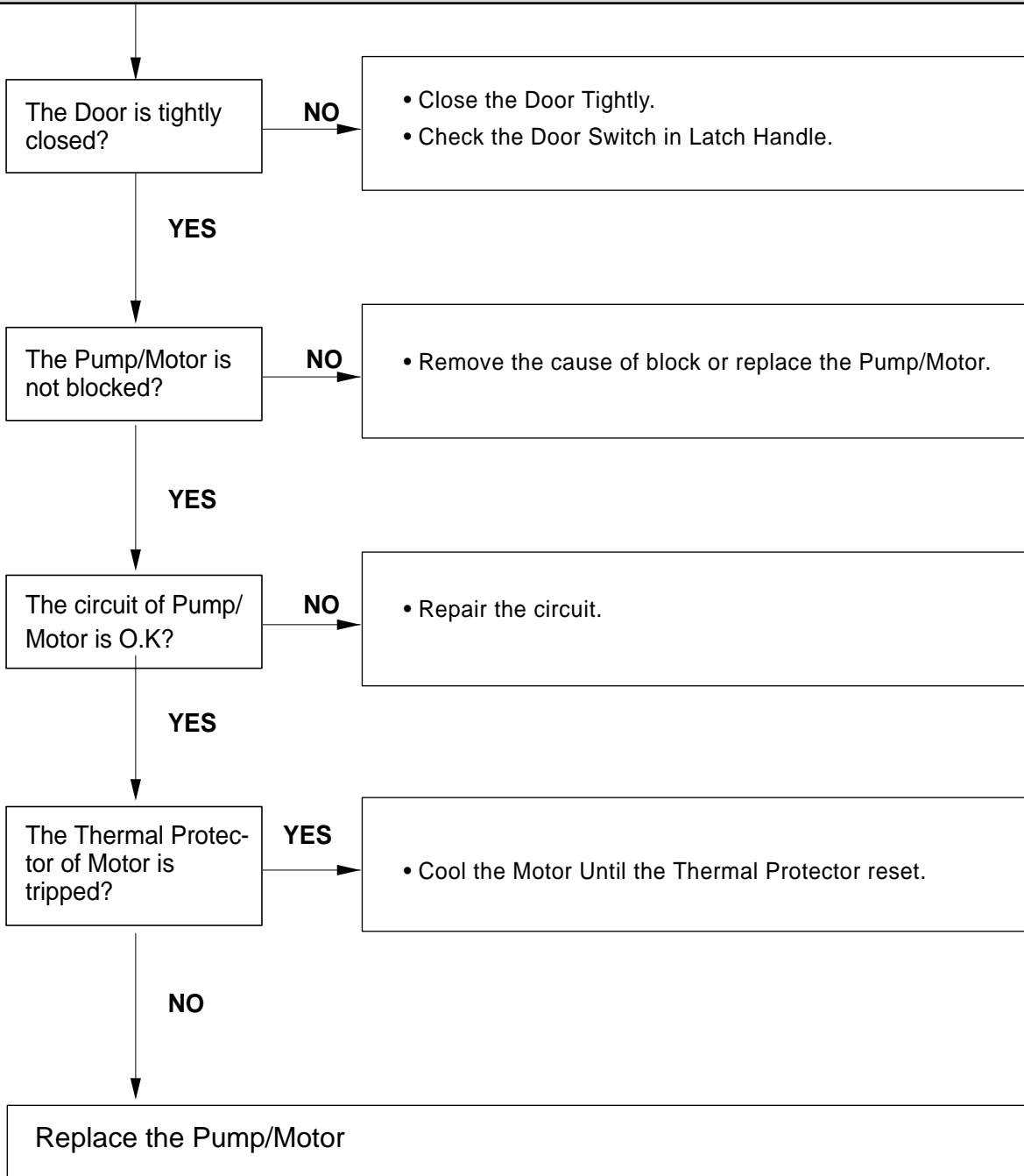
ERROR MESSAGE	POSSIBLE CAUSE FOR ERROR OCCURRENCE	REMEDY
<p>EXCESS ERROR</p>  <p>displayed</p> <p>Condition</p> <p>Excessive water is supplied than normal water level.(Automatically drain Pump operated.)</p>	<ul style="list-style-type: none"> • The Inlet Valve is troubled. • The Air Break is troubled. • The Sensor Assembly is troubled. • The Controller is troubled. 	<ul style="list-style-type: none"> • Replace the Inlet Valve. • Replace the air breaker. • Replace the sensor assembly. • Repair or replace the Controller.
<p>THERMAL ERROR</p>  <p>displayed</p> <p>Condition</p> <p>The resistance of thermistor not normally out put.</p>	<ul style="list-style-type: none"> • The Circuit of thermistor is troubled. • Thermistor is troubled. • The Controller is troubled. 	<ul style="list-style-type: none"> • Repair the Circuit of thermistor. • Replace the Thermistor. • Repair or replace the Controller.
<p>HEATER ERROR</p>  <p>displayed</p> <p>Condition</p> <p>The water is not heated or the temperature in the Tub is overheated to over 95°C</p>	<ul style="list-style-type: none"> • The Circuit of Heater is troubled. • The Thermistor is troubled. • The Heater is shorted. • The Relay Circuit is troubled. 	<ul style="list-style-type: none"> • Repair the Circuit of Heater. • Replace the Thermistor. • Replace the Heater. • Repair the Relay Circuit..
<p>COOL DRY</p>  <p>displayed</p> <p>Condition</p> <p>No error message</p>	<ul style="list-style-type: none"> • This process is not part of the program. At this time, the fan will operate for a few more minutes to diminish any remaining moisture. If you want, you can now open and unload the dishwasher. Otherwise the dishwasher automatically switches off for safety and energy saving later. 	

B. TROUBLE DIAGNOSES AND REPAIR BY SYMPTOM

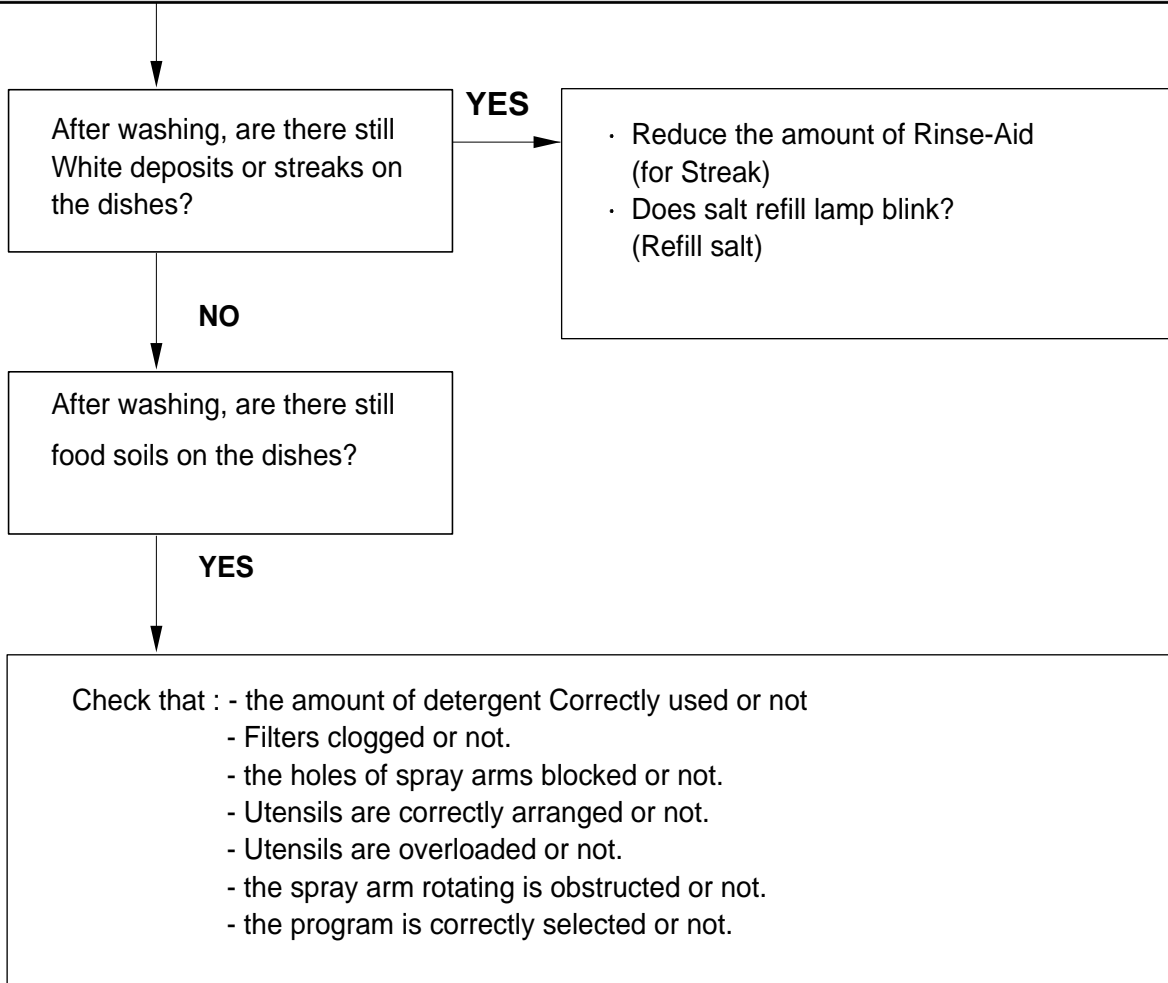
No Power on when the power button pressed.



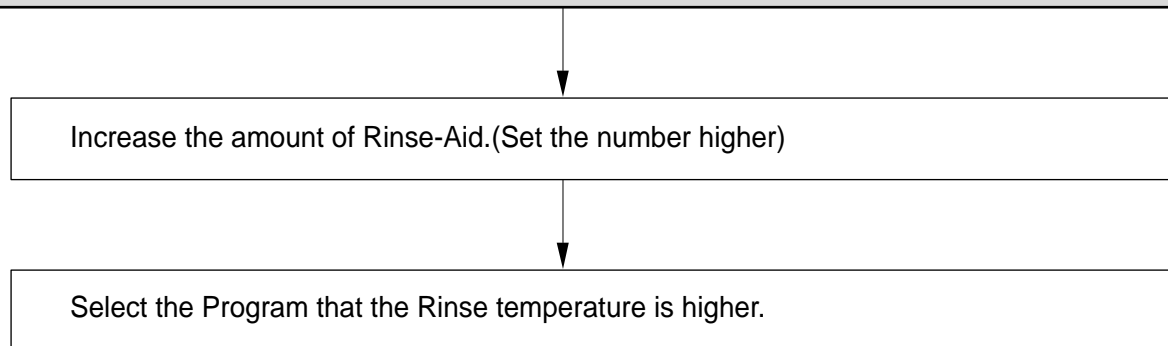
The Wash Pump/Motor does not run.



Washing Results are not Satisfactory



Dry Results are not satisfactory



Power Button not automatically off after operation.

Check the button is blocked by foreign materials.

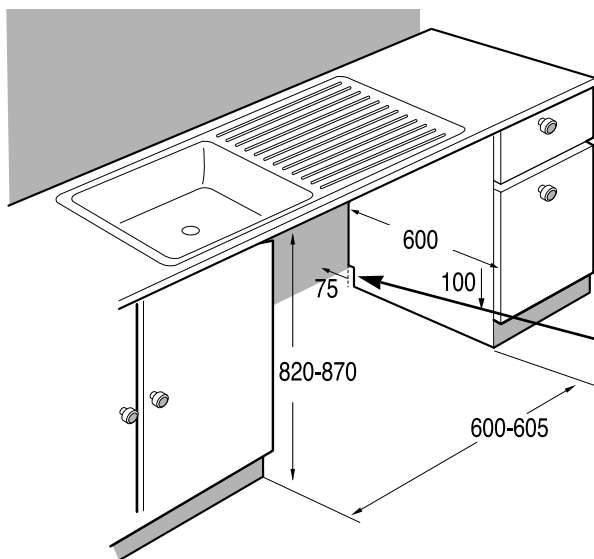
Check the Power Switch.(Replace it, if necessary.)

Check the Controller.(Replace it, if necessary.)

9. INSTALLATION INSTRUCTION

Step1: Prepare Cupboard opening

1. This dishwasher is designed to fit to the size shown as below.
2. Select a location as close to sink as possible for easy connections to water and drain lines.
3. The dishwasher should not be installed more than 3 meters from sink for proper drainage.
4. If dishwasher is to be installed in corner, minimum 5 cm of space is required between the washer and an adjacent cabinet or a wall.



If bare chipboard is adjacent to or above the dishwasher, it should be sealed with a waterproofing paint or sealant to prevent swelling due to steam.

Cut out for hoses and electrical cables on either side.
(approx.. 100 X 75)

Cupboard Opening Dimension
(mm)

- Ensure the floor under the dishwasher is at the same level as the rest of the room to allow for any service requirements.

Step 2 : PREPARE ELECTRICAL WIRING

CAUTION

For personal safety, remove house fuse or open circuit breaker before installation.

Do not use an extension cord or adapter plug with this appliance.

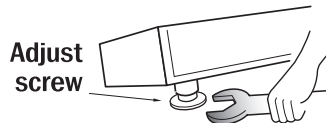
Electrical and grounding connections must comply with the national electrical code/provincial and municipal code and/or other local codes.

1. This appliance must be supplied with correct rating voltage and hertz as shown on instruction manual, and connected to an individual, properly grounded branch circuit, protected by minimum 15 amp circuit breaker or time delay fuse.
Wiring must be 2 wires with ground.
2. The power point must be in a accessible location adjacent to and not behind the dishwasher and within 1.2 meters of the dishwasher side. A correctly rated, wired and earthed extension cord may be used if necessary.
(See Fig. A)
3. The power point must be correctly earthed, if in doubt, have it checked by a qualified Electrician.
No other appliance shall be connected to the same plug outlet by a double adapter or similar plug.

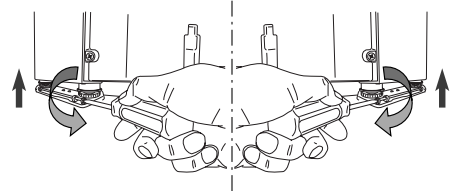
Step 3 : PREPARE DISHWASHER FOR INSTALLATION

1. Lay the dishwasher on its back.
2. Adjust the legs to the needed height of cabinet as shown at below.

Free Standing



Built-in

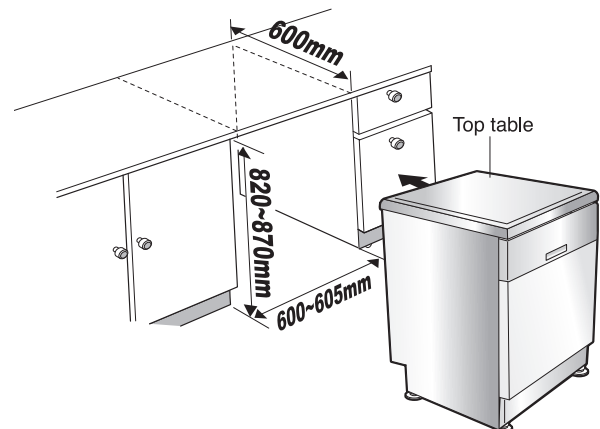


Step 4 : INSTALL THE DISHWASHER IN CUPBOARD

1. Before sliding the dishwasher into the cupboard opening, all necessary final height adjustment and balancing adjustment should be done using the spanner.
2. Slide the dishwasher into the cabinet opening carefully. Make sure that the drain hose inside the cabinet should not be kinked or exceeded.

CAUTION

If the height of cupboard is below 850mm, you should remove the top table by unscrewing the 2 screws. (Two of front and two of rear)



Step 5 : DRAIN LINE CONNECTION

1. If the end drain hose does not fit to the drain line, use a piece of rubber connector (not supplied) that must be resistant to heat and detergent and may be obtained from a plumbing shop.
2. There are 2 typical connections as shown in Figure A, B

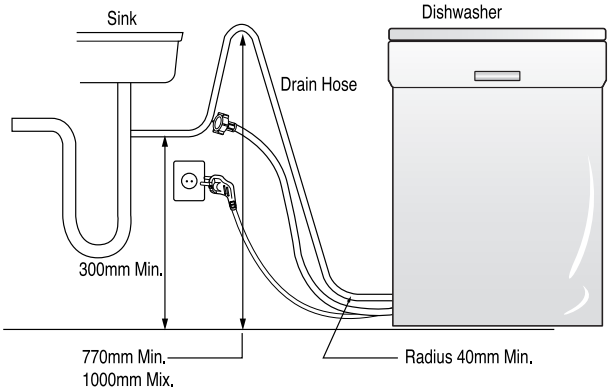
¥The recommended methods of drain hose connection must be adhered to within the areas of Water Board Authority. Several other options are commonly used outside this area and local council or plumbers should be able to advise of these.

¥The S trap spigot must be drilled out cleanly and free of obstruction to its maximum internal diameter, if used for drainage.

¥To prevent syphoning, one of the following instruction methods must be followed :

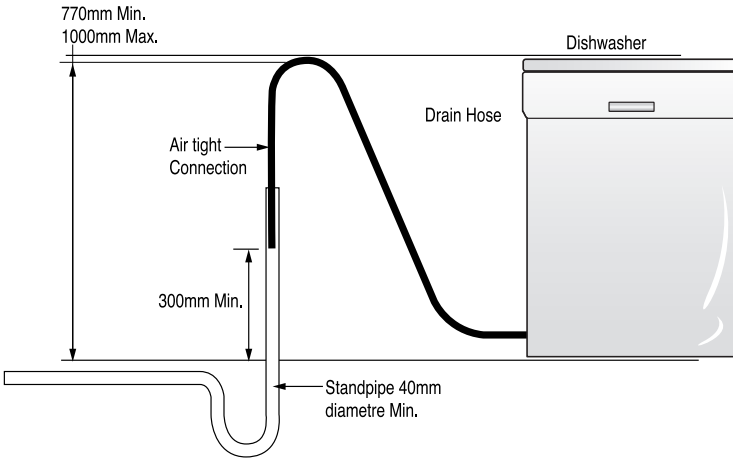
- When the drainage hose is connected to a sink S trap or waste disposal unit, the hose must be looped up to the under side of the bench top and secured.

Fig. A



- When the drain hose is connected to a separate stand pipe, it is essential that an air tight connection is made. Refer to Fig. B

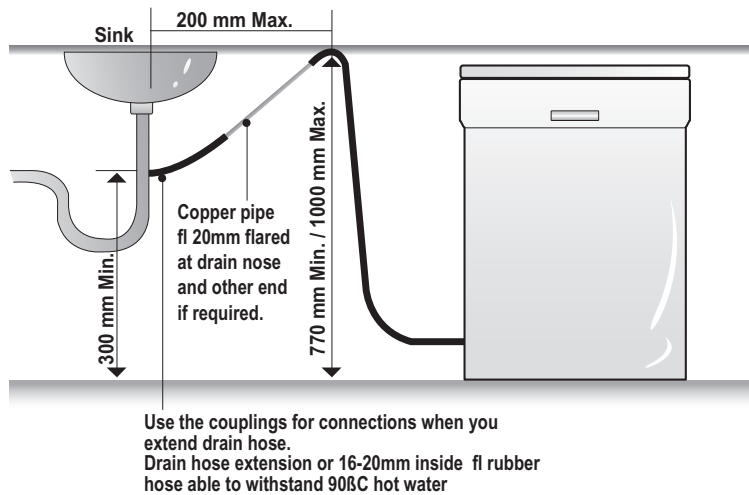
Fig. B . Drainage connection-stand pipe



Drain Hose Extension

- Drain Hose extension kits are available from through your local service centre.

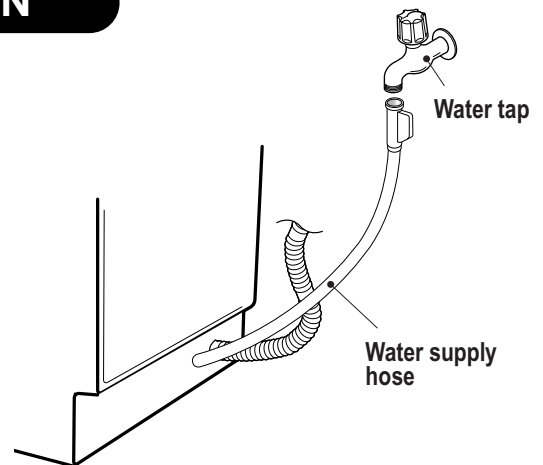
Extend drain Hose as shown below.



Step 6 : WATER SUPPLY CONNECTION

1. Connect the water supply hose to the valve behind dishwasher and the water tap as shown in figure.
This dishwasher may be fed with either hot or cold water. If the water can not be maintained below 65°C, the dishwasher must be connected to cold water.
2. When connecting, the sealing tape or sealing compound should be used to avoid water leaks.

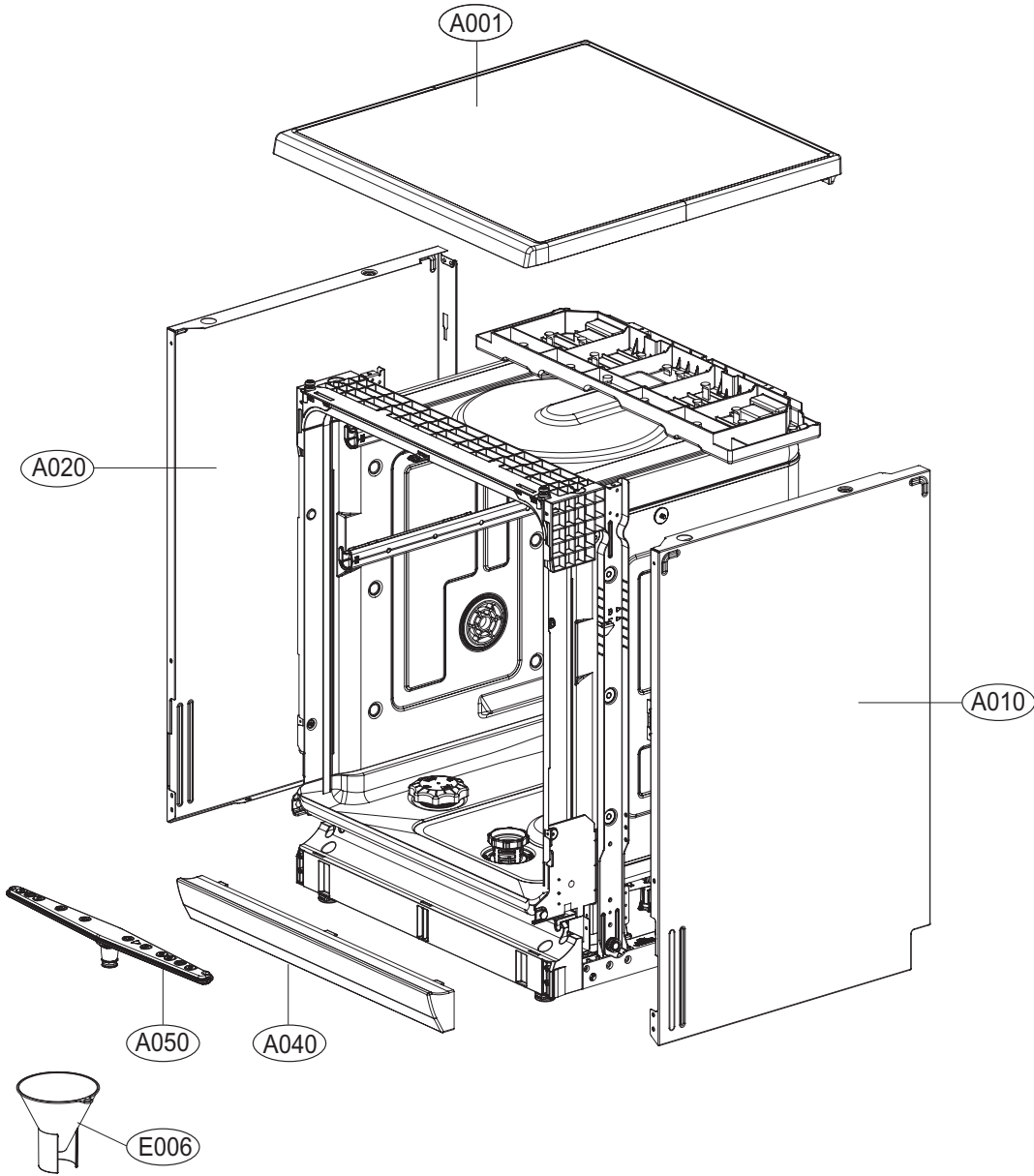
Make sure that the line is not kinked or sharply bent.

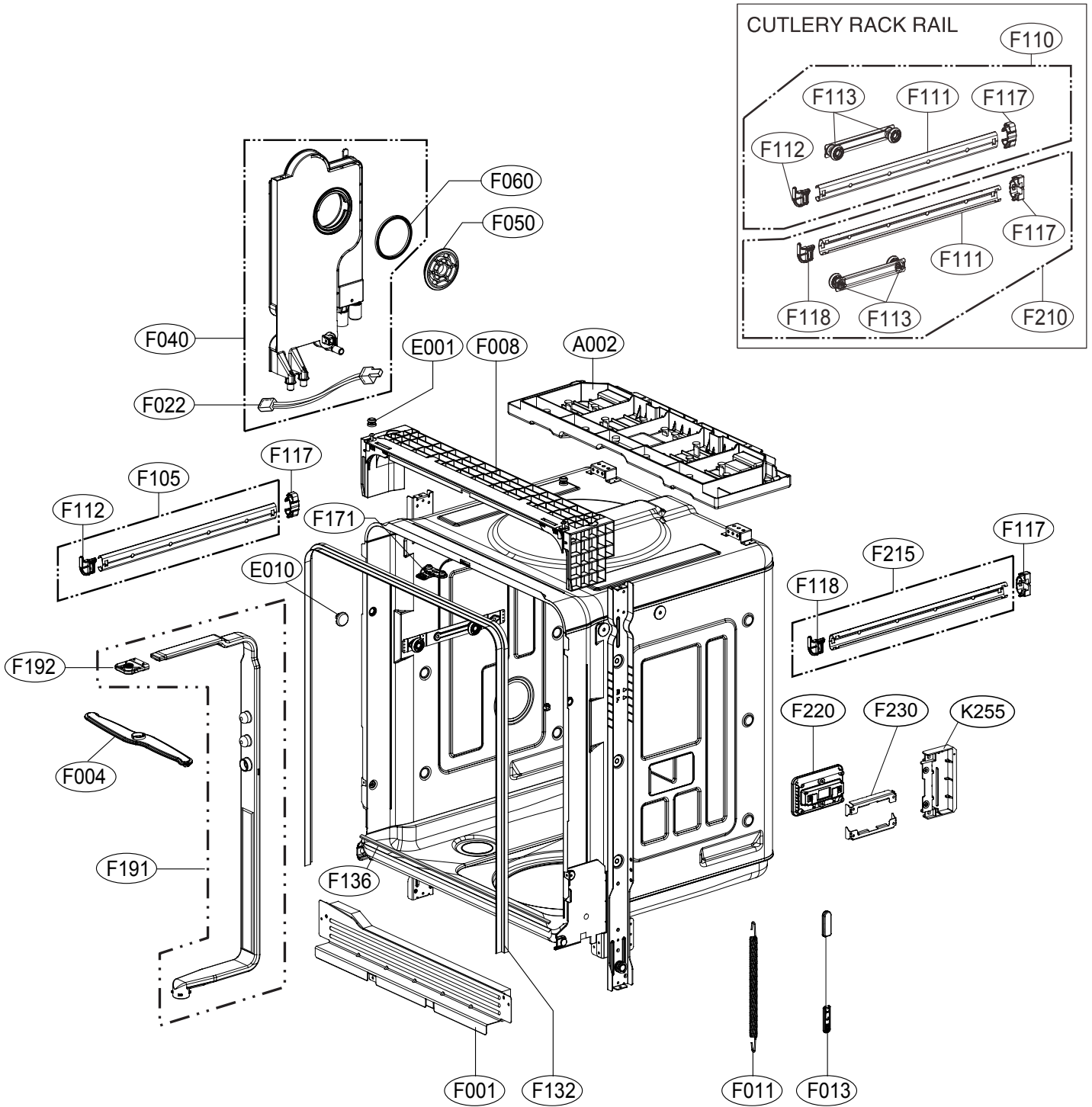


Step 7 : FINAL CHECK AND ASSEMBLING

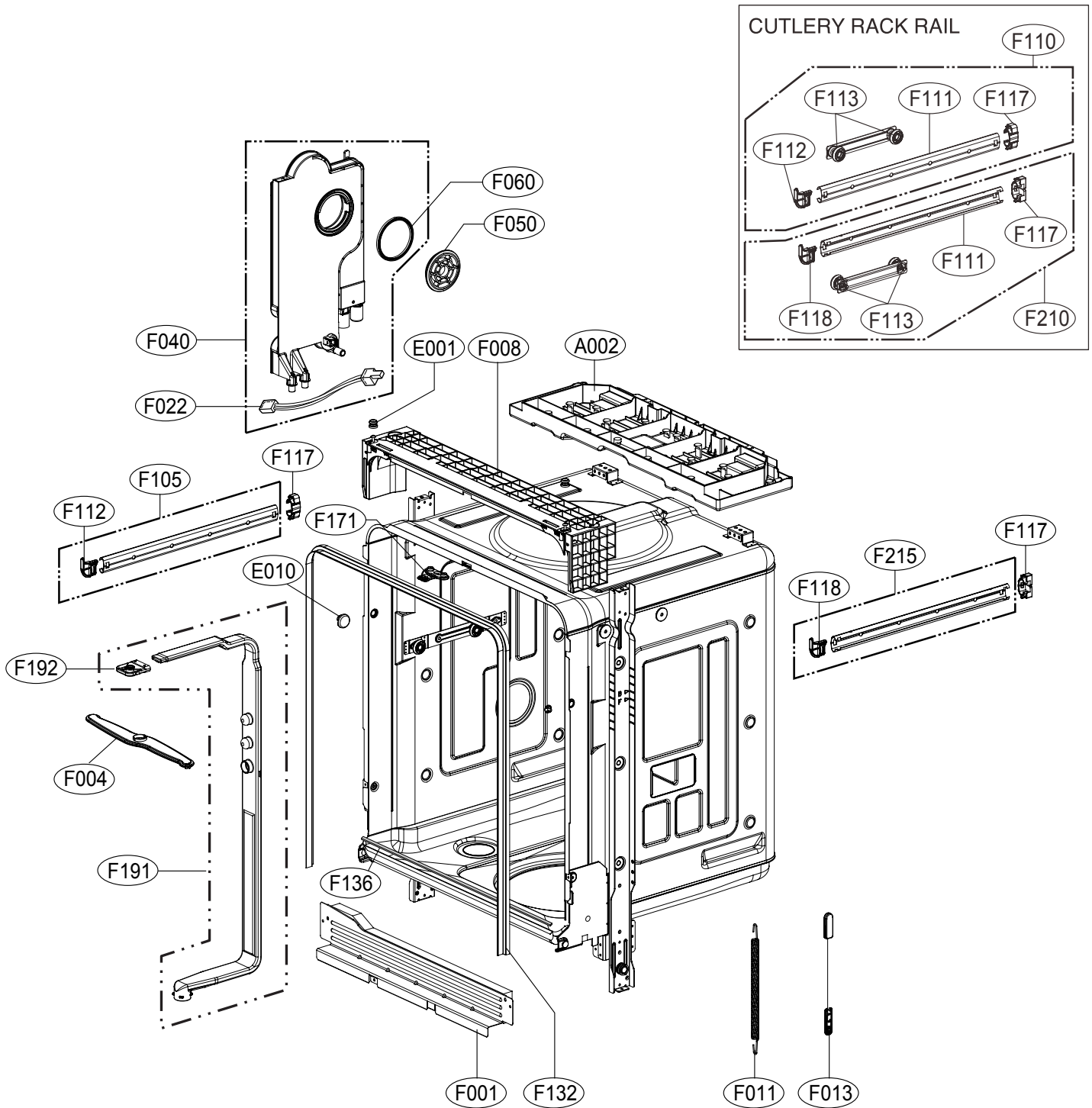
1. Securely hand tighten supply hose to water supply.
Plug power cord into an earthed power point and switch on.
2. Operate the dishwasher through one cycle (Quick cycle is recommended) to check for water leak and operating conditions.

10. EXPLODED VIEW

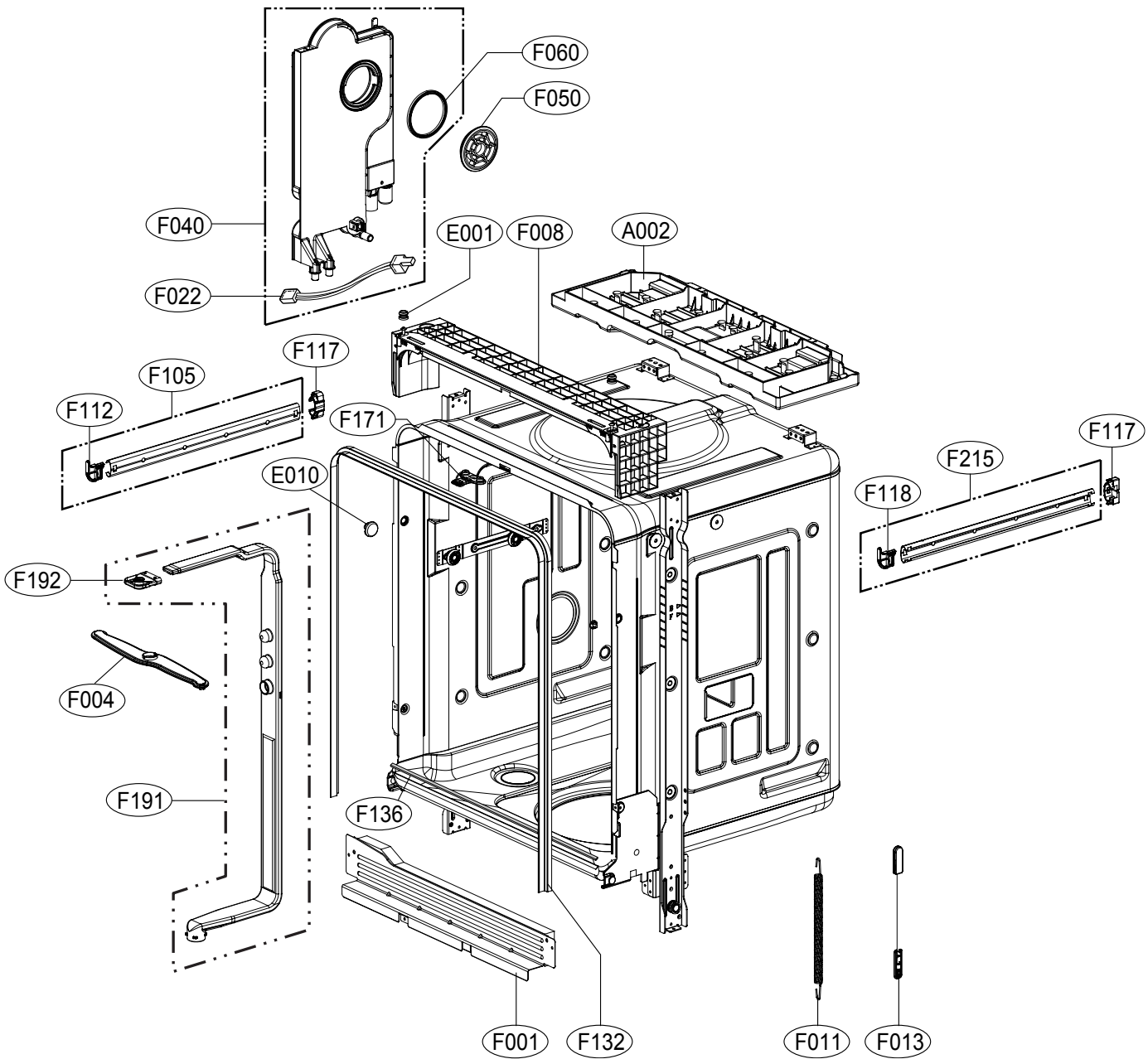


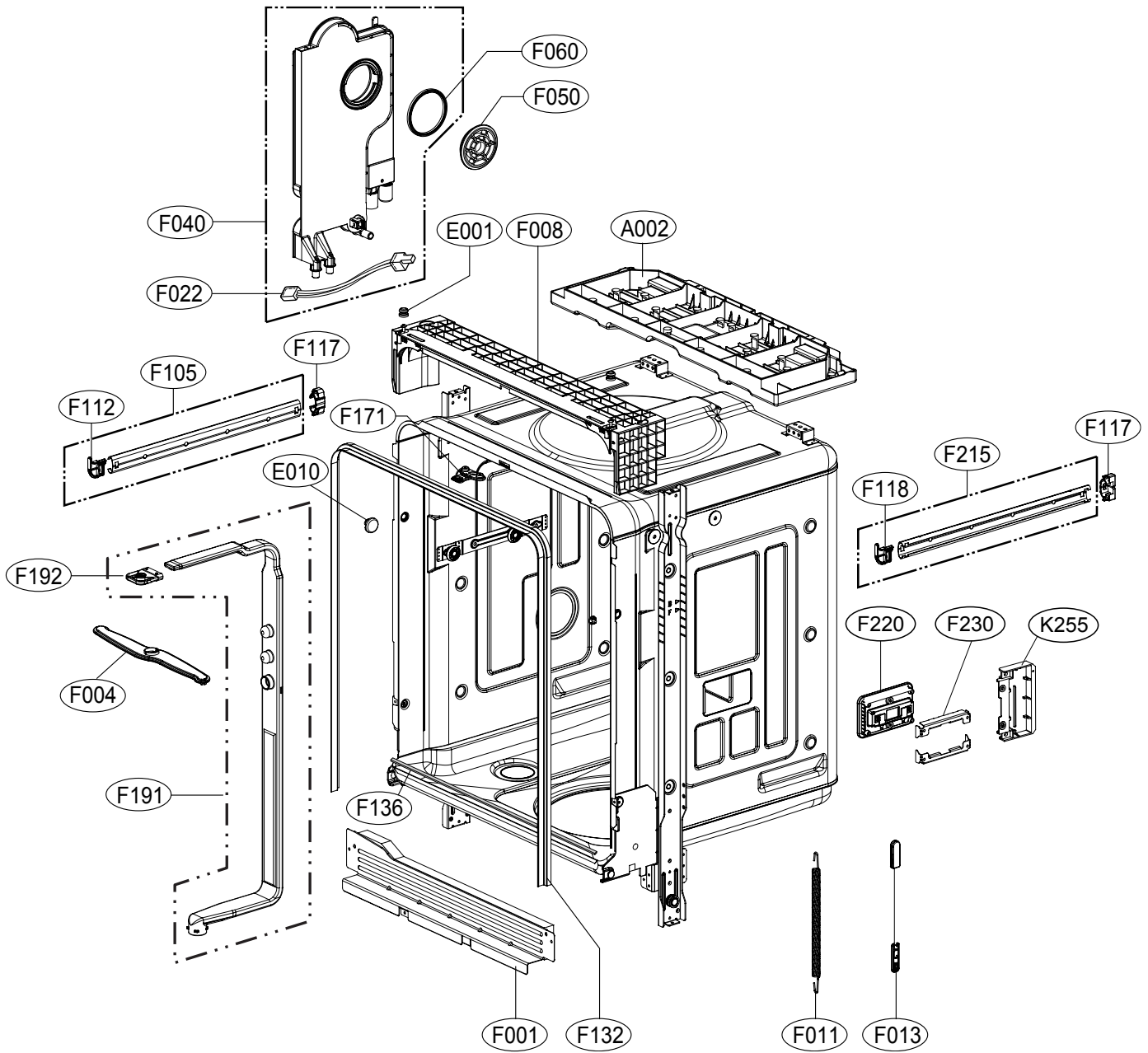


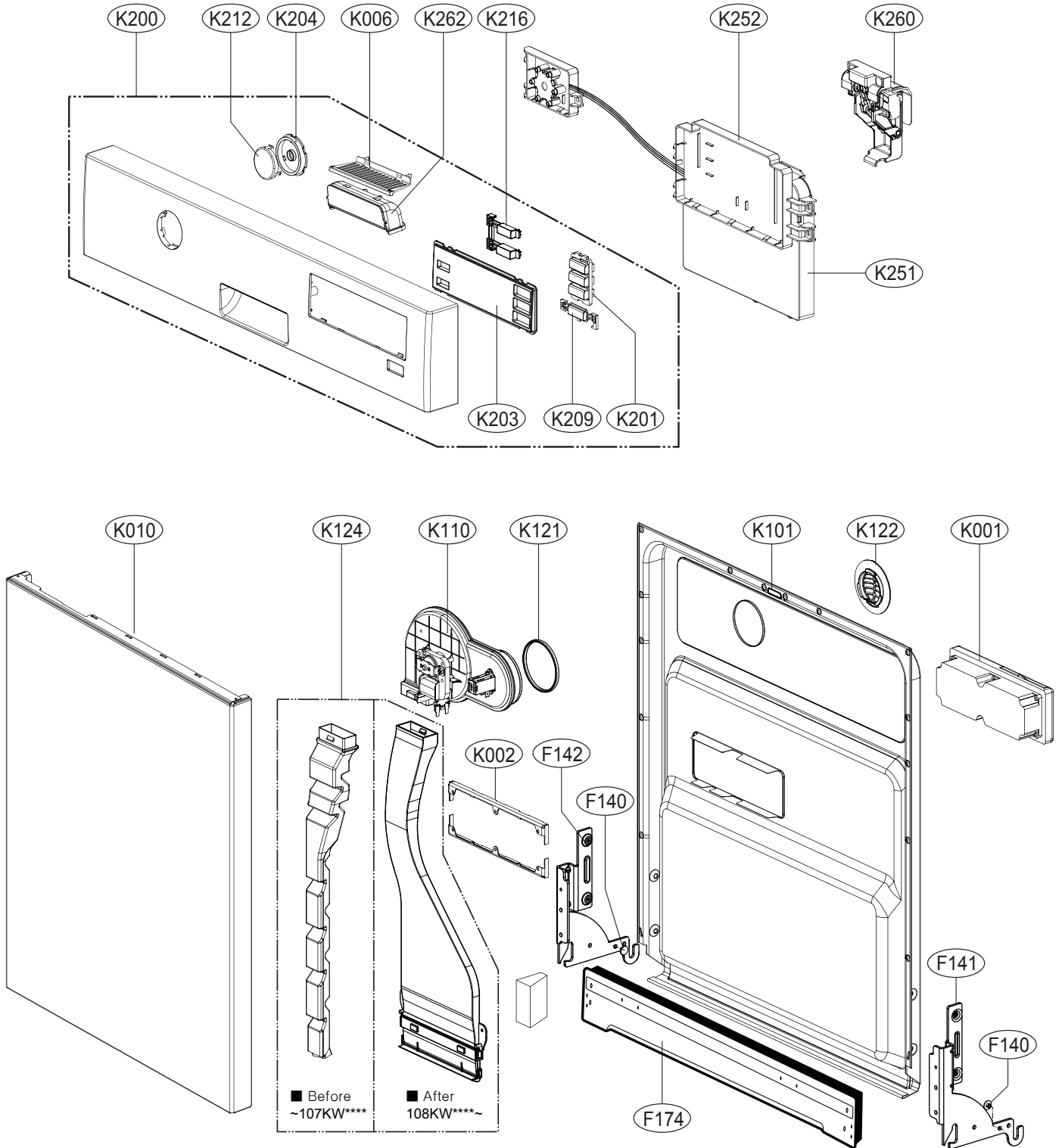
D1421 Series

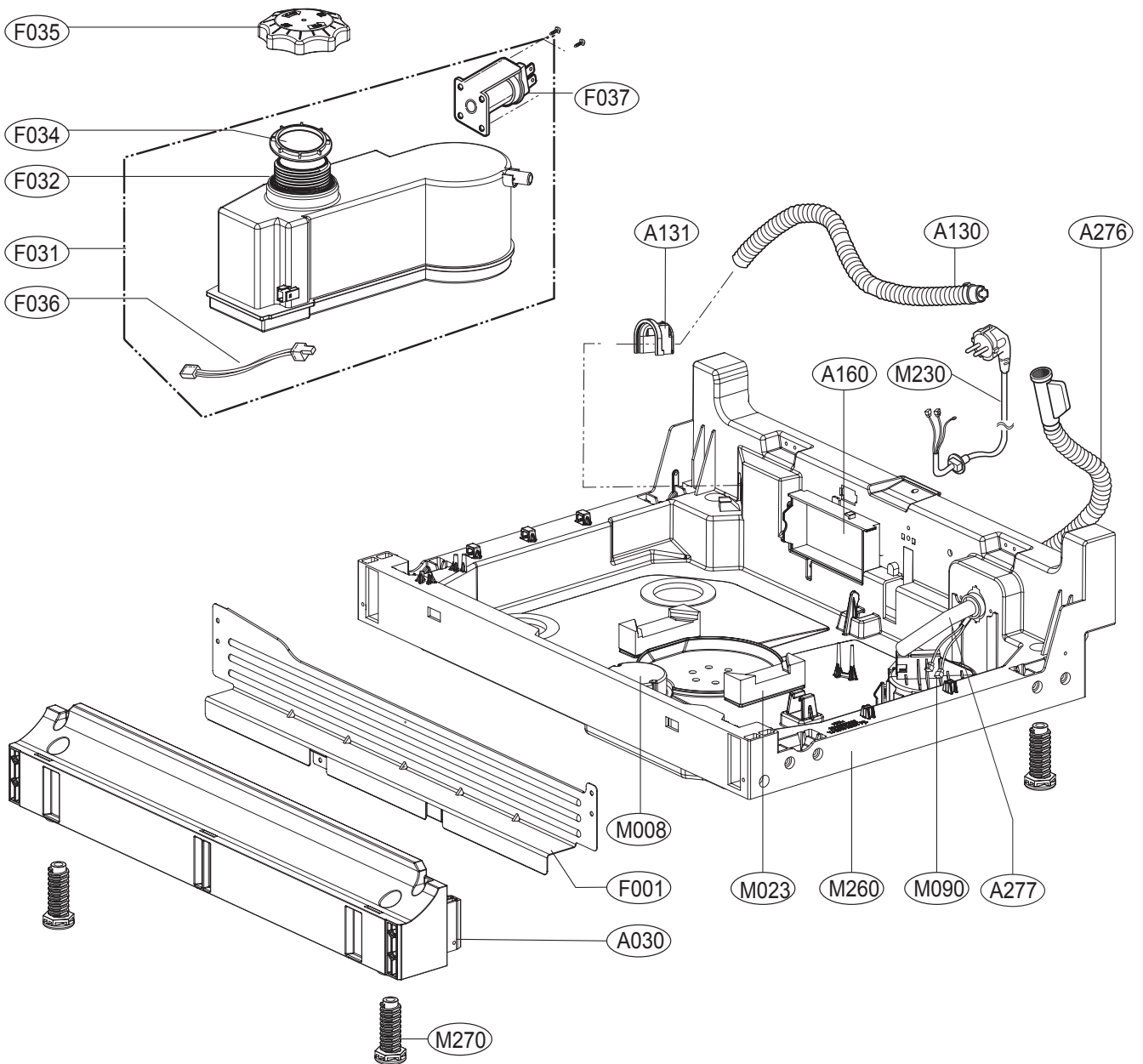


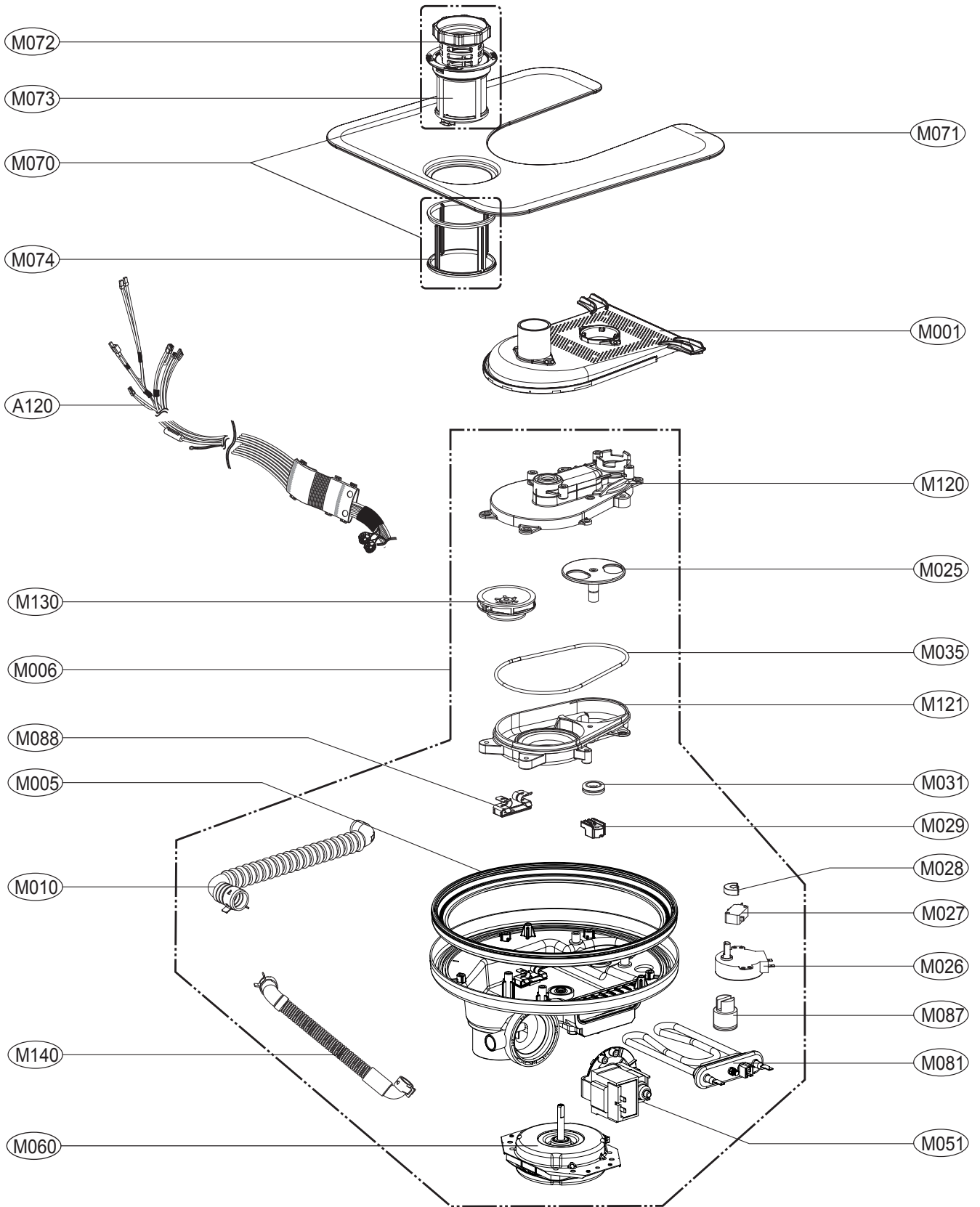
D1422 Series



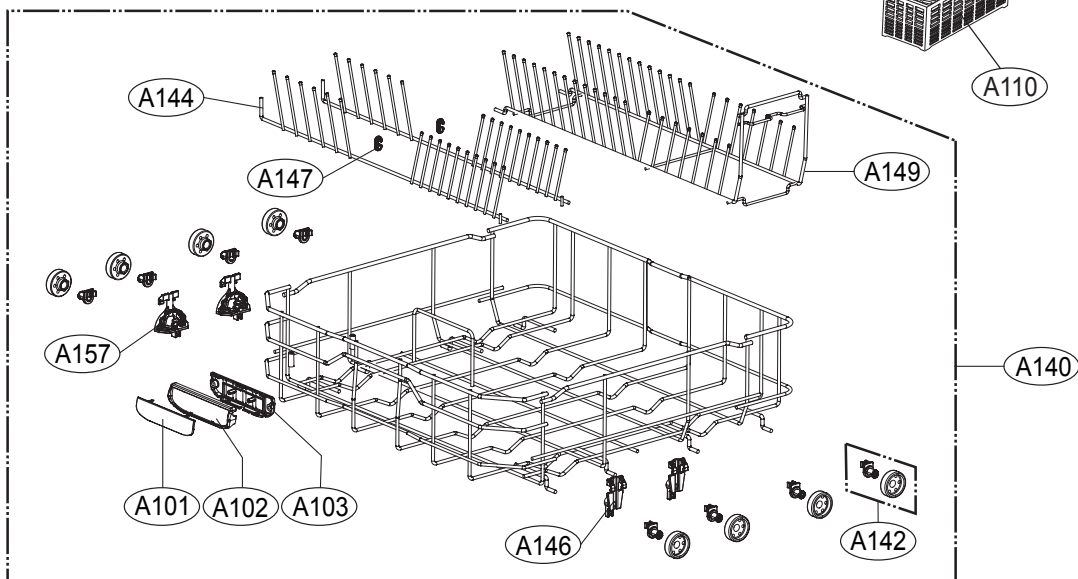
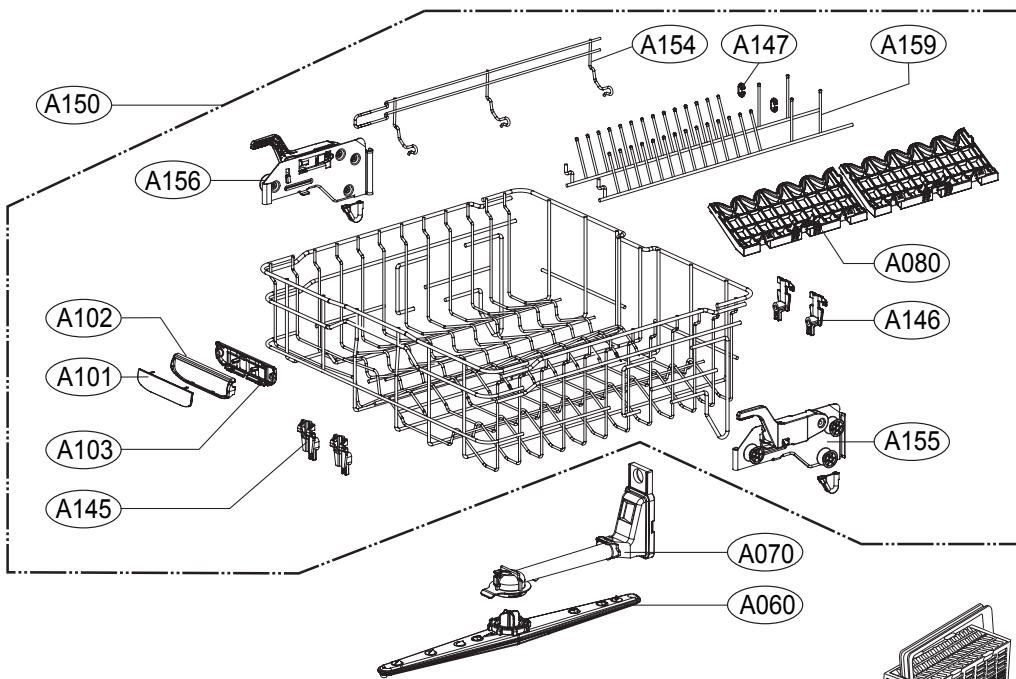
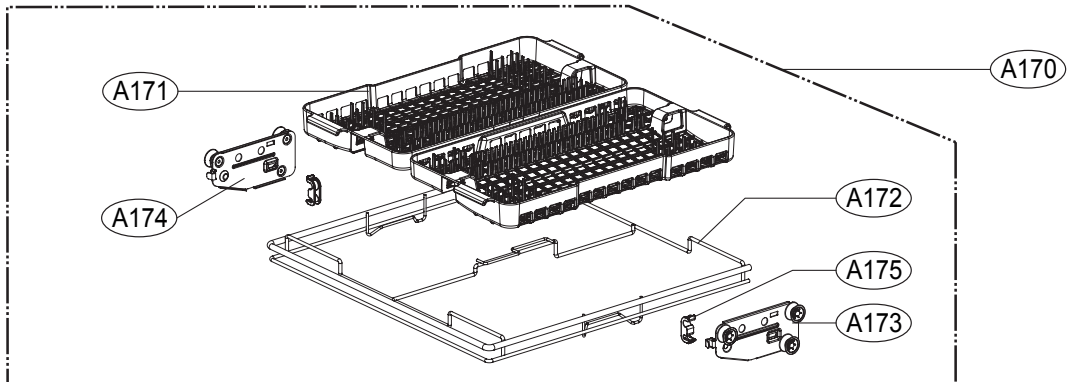


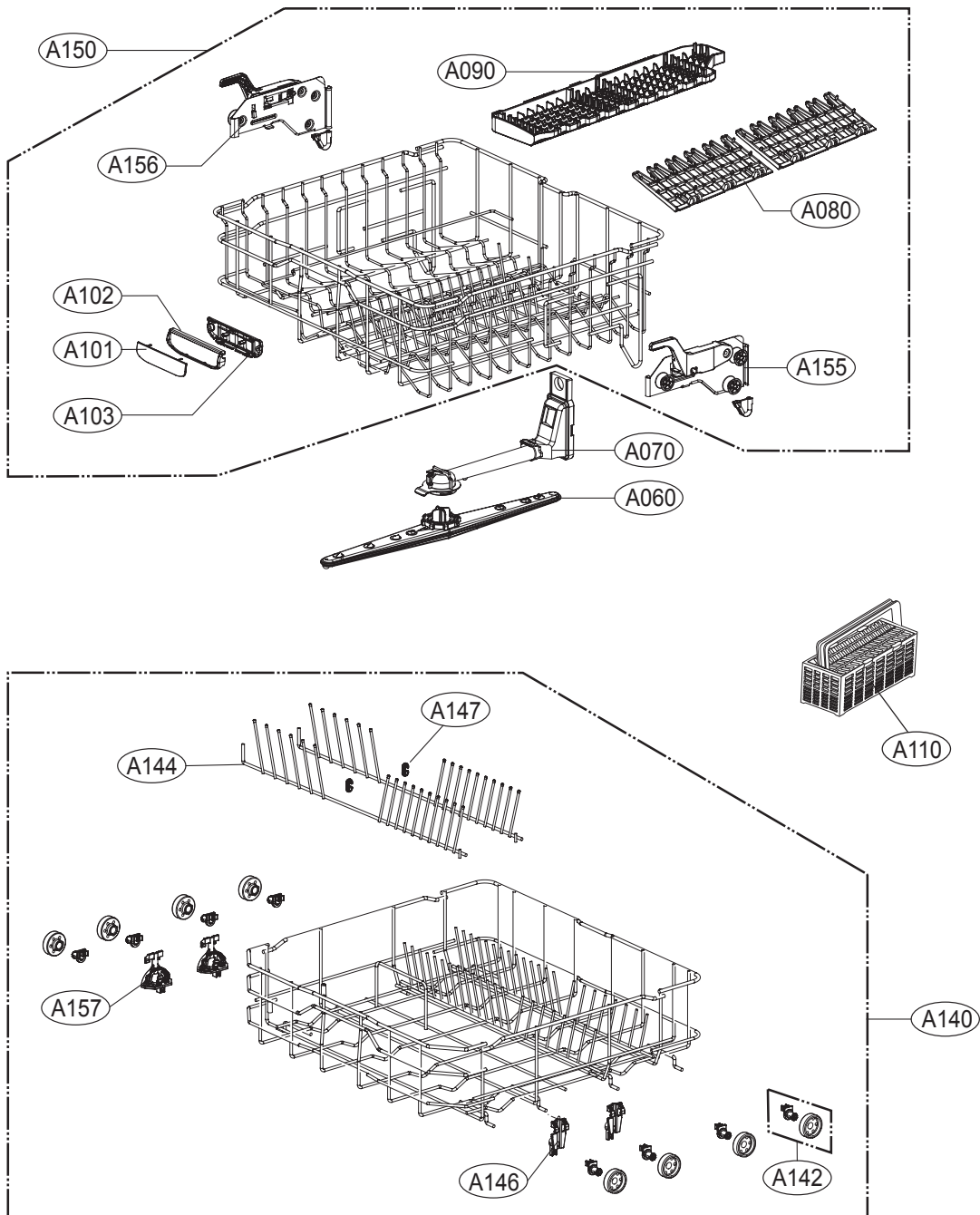


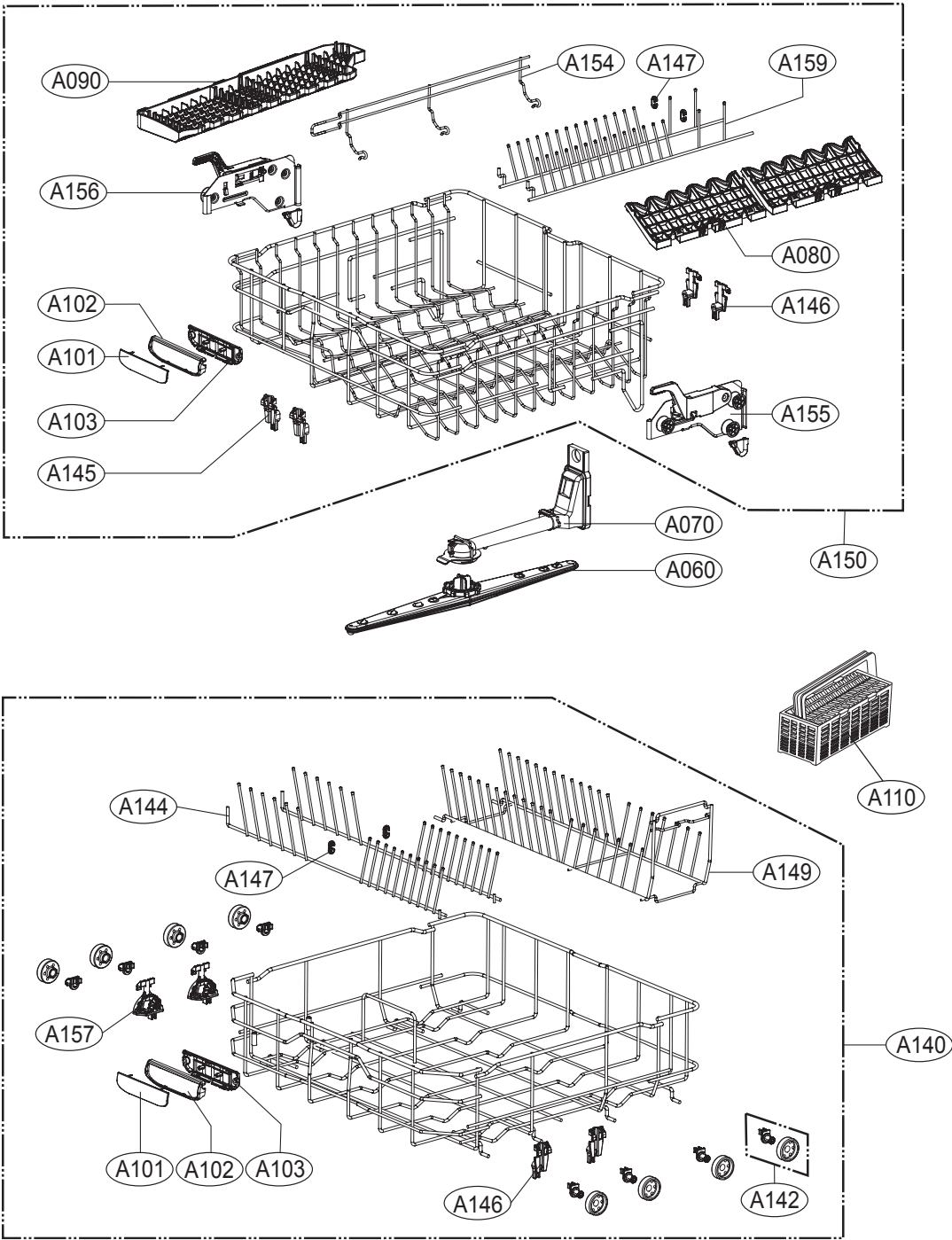




D1420 / D1421 Series









LG Electronics Inc.

P/No. : 3828DD3007T